



Poniższe informacje o produkcie pochodzą ze strony producenta i mają charakter informacyjny.

W celu poznania szczegółowej oferty zapraszamy do kontaktu.

---

**NOWOCZESNE ROZWIĄZANIA TELEKOMUNIKACYJNE DLA TWOJEJ FIRMY**

**BIURO**

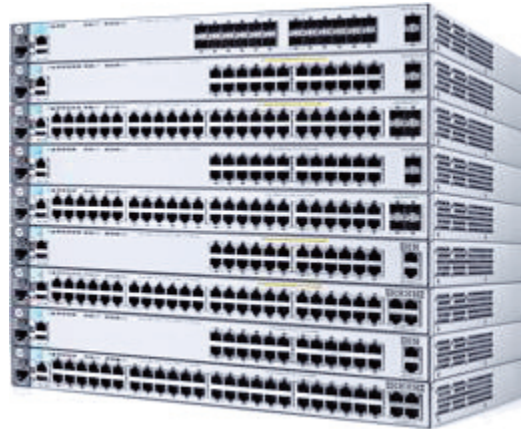
ul. Wita Stwosza 7 pok. 11  
40-040 Katowice  
Tel. 324940690 / Fax. 324940699  
e-mail: [biuro@pjptelecom.pl](mailto:biuro@pjptelecom.pl)

**DANE DO FAKTURY**

PJP Telecom  
ul. Kredytowa 15/63  
40-562 Katowice, Polska  
NIP: PL 634-118-45-82



# HP 3800 Switch Series



## Key features

- Fully managed Layer 3 stackable switch series
- Low-latency, highly resilient architecture
- SFP+, 10GBASE-T, PoE+, modular stacking
- Highly resilient meshed stacking technology
- Industry-leading lifetime warranty

## Product overview

The HP 3800 Switch Series is a family of nine fully managed Gigabit Ethernet switches available in 24-port and 48-port models, with or without PoE+, and with either SFP+ or 10GBASE-T uplinks. The 3800 Switch Series utilizes the latest HP ProVision ASIC technology and advances in hardware engineering to deliver one of the most resilient and energy-efficient switches in the industry. Meshed stacking technology is implemented in the HP 3800 Switch Series to deliver chassis-like resiliency in a flexible, stackable form factor.

## Features and benefits

### Software-defined networking

- **NEW OpenFlow**  
is a key technology enabling software-defined networking by allowing the separation of data (packet forwarding) and control (routing decision) paths

### Quality of Service (QoS)

- **Advanced classifier-based QoS**  
classifies traffic using multiple match criteria based on Layer 2, 3, and 4 information; applies QoS policies such as setting priority level and rate limit to selected traffic on a per-port or per-VLAN basis
- **Layer 4 prioritization**  
enables prioritization based on TCP/UDP port numbers
- **Class of Service (CoS)**  
sets the IEEE 802.1p priority tag based on IP address, IP Type of Service (ToS), Layer 3 protocol, TCP/UDP port number, source port, and DiffServ
- **Bandwidth shaping**
  - **Port-based rate limiting**  
provides per-port ingress-/egress-enforced maximum bandwidth
  - **Classifier-based rate limiting**  
uses an access control list (ACL) to enforce maximum bandwidth for ingress traffic on each port
  - **Guaranteed minimum**  
provides per-port, per-queue egress-based guaranteed minimum bandwidth
- **Remote intelligent mirroring**  
mirrors selected ingress/egress traffic based on ACL, port, MAC address, or VLAN to a local or remote HP 8200 zl, 6600, 6200 yl, 5400 zl, 3800, or 3500 Switch anywhere on the network
- **RMON, XRMON, and sFlow v5**  
provide advanced monitoring and reporting capabilities for statistics, history, alarms, and events
- **Traffic prioritization**  
allows real-time traffic classification into eight priority levels mapped to eight queues

### Management

- **Friendly port names**  
allow assignment of descriptive names to ports
- **IEEE 802.1AB Link Layer Discovery Protocol (LLDP)**  
automated device discovery protocol provides easy mapping of network management applications
- **Command authorization**  
leverages RADIUS to link a custom list of CLI commands to an individual network administrator's login; an audit trail documents activity

- **Uni-Directional Link Detection (UDLD)**  
monitors a cable between two switches and shuts down the ports on both ends if the cable is broken, turning the bidirectional link into a unidirectional one; this prevents network problems such as loops
- **Multiple configuration files**  
can be stored to the flash image
- **Dual flash images**  
provide independent primary and secondary operating system files for backup while upgrading
- **Out-of-band Ethernet management port**  
enables management over a separate physical management network; keeps management traffic segmented from network data traffic
- **NEW Comware CLI**
  - **Comware-compatible CLI**  
bridges the experience of HP Comware CLI users who are using the HP ProVision software CLI
  - **Display and fundamental Comware CLI commands**  
are embedded in the switch CLI as native commands; display output is formatted as on Comware-based switches, and fundamental commands provide a Comware-familiar initial switch setup
  - **Configuration Comware CLI commands**  
when Comware commands are entered, CLI help is elicited to formulate the correct ProVision software CLI command

### Connectivity

- **Jumbo frames**  
on Gigabit Ethernet and 10-Gigabit ports, jumbo frames allow high-performance remote backup and disaster-recovery services
- **IEEE 802.3at Power Over Ethernet Plus (PoE+)**  
provides up to 30 W per port to IEEE 802.3 for devices that use PoE/PoE+, such as video IP phones, IEEE 802.11n wireless access points, and advanced pan/zoom/tilt security cameras
- **Prestandard PoE support**  
detects and provides power to prestandard PoE devices; see list of supported devices in the product FAQs at [www.hp.com/networking](http://www.hp.com/networking)
- **Choice of uplinks**
  - **SFP+ uplink models**  
provide fiber optic (up to 70 km) or direct attach cable (DAC) connectivity
  - **10GBASE-T uplink models**  
offer 10GbE speeds using standard RJ-45 connectors and standard twisted pair cabling up to 100 m
- **Auto-MDIX**  
automatically adjusts for straight-through or crossover cables on all RJ-45 ports

- **IPv6**

- **IPv6 host**  
enables switches to be managed in an IPv6 network
- **Dual stack (IPv4 and IPv6)**  
transitions from IPv4 to IPv6, supporting connectivity for both protocols
- **MLD snooping**  
forwards IPv6 multicast traffic to the appropriate interface
- **IPv6 ACL/QoS**  
supports ACL and QoS for IPv6 network traffic
- **IPv6 routing**  
supports static and OSPFv3 routing protocols
- **6in4 tunneling**  
supports encapsulation of IPv6 traffic in IPv4 packets

## Performance

- **Selectable queue configurations**  
allows for increased performance by selecting the number of queues and associated memory buffering that best meet the requirements of the network applications
- **Energy-efficient design**
  - **High-efficiency power supplies**  
80 PLUS Gold-certified power supplies increase power savings
  - **Energy-efficient Ethernet support**  
IEEE 802.3az support reduces power consumption
- **Meshed stacking technology**
  - **High-performance stacking**  
provides up to 336 Gbps of stacking throughput; each 4-port stacking module can support up to 42 Gbps in each direction per stacking port
  - **Ring, chain, and mesh topologies**  
support up to a 10-member ring or chain and 5-member fully meshed stacks; meshed topologies offer increased resiliency vs. a standard ring
  - **Virtualized switching**  
when stacked, switches appear as a single chassis, providing simplified management
- **HP ProVision ASIC architecture**  
designed with the latest HP ProVision ASIC, with very low latency, increased packet buffering, and adaptive power consumption

## Resiliency and high availability

- **Nonstop switching and routing**  
improves network availability to better support critical applications such as unified communication and mobility; traffic will continue to be forwarded during failover when backup member of the stack becomes the commander
- **IEEE 802.3ad Link Aggregation Protocol (LACP) and HP port trunking**  
support up to 24 trunks, each with up to 8 links (ports) per trunk

- **IEEE 802.1s Multiple Spanning Tree**

provides high link availability in multiple VLAN environments by allowing multiple spanning trees; provides legacy support for IEEE 802.1d and IEEE 802.1w

- **Virtual Router Redundancy Protocol (VRRP)**

allows groups of two routers to dynamically back each other up to create highly available routed environments

- **Dual hot-swappable power supplies**

- **Increased resiliency**  
second power supply can allow for complete switch power redundancy in case of power line or supply failure
- **Increased PoE+ power**  
second power supply can increase total available PoE+ power

- **Distributed trunking**

enables loop-free and redundant network topology without using Spanning Tree Protocol; allows a server or switch to connect to two switches using one logical trunk for redundancy and load sharing

## Layer 2 switching

- **GARP VLAN Registration Protocol**

allows automatic learning and dynamic assignment of VLANs

- **IEEE 802.1ad QinQ**

increases the scalability of an Ethernet network by providing a hierarchical structure; connects multiple LANs on a high-speed campus or metro network

- **VLAN support and tagging**

supports the IEEE 802.1Q standard and 2,048 VLANs simultaneously

- **IEEE 802.1v protocol VLANs**

isolate select non-IPv4 protocols automatically into their own VLANs

- **MAC-based VLAN**

provides granular control and security; uses RADIUS to map a MAC address/user to specific VLANs

- **Rapid Per-VLAN Spanning Tree (RPVST+)**

allows each VLAN to build a separate spanning tree to improve link bandwidth usage; is compatible with PVST+

- **HP switch meshing**

dynamically load balances across multiple active redundant links to increase available aggregate bandwidth; allows concurrent Layer 3 routing

## Layer 3 services

- **Loopback interface address**

defines an address in Routing Information Protocol (RIP) and OSPF, improving diagnostic capability

- **Route maps**

provide more control during route redistribution; allow filtering and altering of route metrics

- **User Datagram Protocol (UDP) helper function**  
allows UDP broadcasts to be directed across router interfaces to specific IP unicast or subnet broadcast addresses, and prevents server spoofing for UDP services such as DHCP

### Layer 3 routing

- **Routing Information Protocol (RIP)**  
provides RIPv1 and RIPv2 routing
- **Static IP routing**  
provides manually configured routing for both IPv4 and IPv6 networks
- **OSPF**  
provides OSPFv2 for IPv4 routing and OSPFv3 for IPv6 routing
- **Policy-based routing**  
makes routing decisions based on policies set by the network administrator
- **Border Gateway Protocol (BGP)**  
provides IPv4 Border Gateway Protocol routing, which is scalable, robust, and flexible

### Security

- **Source-port filtering**  
allows only specified ports to communicate with each other
- **RADIUS/TACACS+**  
eases switch management security administration by using a password authentication server
- **Secure Shell**  
encrypts all transmitted data for secure remote CLI access over IP networks
- **Secure Sockets Layer (SSL)**  
encrypts all HTTP traffic, allowing secure access to the browser-based management GUI in the switch
- **Port security**  
allows access only to specified MAC addresses, which can be learned or specified by the administrator
- **MAC address lockout**  
prevents particular configured MAC addresses from connecting to the network
- **Detection of malicious attacks**  
monitors 10 types of network traffic and sends a warning when an anomaly that potentially can be caused by malicious attacks is detected
- **Secure FTP**  
allows secure file transfer to and from the switch; protects against unwanted file downloads or unauthorized copying of a switch configuration file
- **Switch management logon security**  
can require either RADIUS or TACACS+ authentication for secure switch CLI logon
- **Secure management access**  
securely encrypts all access methods (CLI, GUI, or MIB) through SSHv2, SSL, and/or SNMPv3
- **ICMP throttling**  
defeats ICMP denial-of-service attacks by enabling any switch port to automatically throttle ICMP traffic
- **Virus throttling**  
detects traffic patterns typical of worm-type viruses and either throttles or entirely prevents the virus from spreading across the routed VLANs or bridged interfaces without requiring external appliances
- **Identity-driven ACL**  
enables implementation of a highly granular and flexible access security policy and VLAN assignment specific to each authenticated network user
- **STP BPDU port protection**  
blocks Bridge Protocol Data Units (BPDUs) on ports that do not require BPDUs, preventing forged BPDU attacks
- **Dynamic IP lockdown**  
works with DHCP protection to block traffic from unauthorized hosts, preventing IP source address spoofing
- **DHCP protection**  
blocks DHCP packets from unauthorized DHCP servers, preventing denial-of-service attacks
- **Dynamic ARP protection**  
blocks ARP broadcasts from unauthorized hosts, preventing eavesdropping or theft of network data
- **STP Root Guard**  
protects the root bridge from malicious attacks or configuration mistakes
- **Management Interface Wizard**  
helps secure management interfaces such as SNMP, telnet, SSH, SSL, Web, and USB at the desired level
- **Security banner**  
displays a customized security policy when users log in to the switch
- **Switch CPU protection**  
provides automatic protection against malicious network traffic trying to shut down the switch
- **USB Secure Autorun**  
deploys, diagnoses, and updates a switch using a USB flash drive; works with a secure credential to prevent tampering (requires HP PMC+)
- **Access control lists (ACLs)**  
provide filtering based on the IP field, source/destination IP address/subnet, and source/destination TCP/UDP port number on a per-VLAN or per-port basis

- **Multiple Authentication Methods**

- **IEEE 802.1X**  
authenticates multiple IEEE 802.1X users per port; prevents user "piggybacking" on another user's authentication
- **Web-based authentication**  
authenticates from Web browser for clients that do not support IEEE 802.1X supplicant
- **MAC-based authentication**  
client is authenticated with the RADIUS server based on client's MAC address
- **Concurrent authentication modes**  
enables each switch port to accept up to 32 sessions of IEEE 802.1X, Web, and MAC authentication

## Convergence

- **IP multicast snooping (data-driven IGMP)**  
automatically prevents flooding of IP multicast traffic
- **LLDP-MED (Media Endpoint Discovery)**  
is a standard extension of LLDP that stores values for parameters such as QoS and VLAN to automatically configure network devices such as IP phones
- **PoE allocations**  
support multiple methods (automatic, IEEE 802.3af class, LLDP-MED, or user specified) to allocate PoE power for more efficient energy savings
- **IP multicast routing**  
includes PIM Sparse and Dense modes to route IP multicast traffic
- **Auto VLAN configuration for voice**
  - **RADIUS VLAN**  
uses a standard RADIUS attribute and LLDP-MED to automatically configure a VLAN for IP phones
  - **CDPv2**  
uses CDPv2 to configure legacy IP phones

## Warranty and support

- **Lifetime warranty**  
for as long as you own the product with advance replacement and next-business-day delivery (available in most countries)†
- **Electronic and telephone support**  
limited electronic and telephone support is available from HP; to reach our support centers, refer to [www.hp.com/networking/contact-support](http://www.hp.com/networking/contact-support); for details on the duration of support provided with your product purchase, refer to [www.hp.com/networking/warrantysummary](http://www.hp.com/networking/warrantysummary)
- **Software releases**  
to find software for your product, refer to [www.hp.com/networking/support](http://www.hp.com/networking/support); for details on the software releases available with your product purchase, refer to [www.hp.com/networking/warrantysummary](http://www.hp.com/networking/warrantysummary)

†HP warranty includes repair or replacement of hardware for as long as you own the product, with next business day advance replacement (available in most countries). The disk drive included with HP AllianceOne Advanced Services and Services z1 Modules, HP Threat Management Services z1 Module, HP AllianceOne Extended z1 Module with Riverbed Steelhead, HP MSM765z1 Mobility Controller and HP Survivable Branch Communication z1 Module powered by Microsoft Lync has a five-year hardware warranty. For details, refer to the Software license and hardware warranty statements at [www.hp.com/networking/warranty](http://www.hp.com/networking/warranty).

# HP 3800 Switch Series

## Specifications



	HP 3800-24G-PoE+-25FP+ Switch (J9573A)	HP 3800-48G-PoE+-45FP+ Switch (J9574A)	HP 3800-24G-25FP+ Switch (J9575A)
<b>Included accessories</b>	1 HP 3800 Switch Fan Tray (J9582A) 1 HP X312 1000W 100-240VAC to 54VDC Power Supply (J9580A)	1 HP 3800 Switch Fan Tray (J9582A) 1 HP X312 1000W 100-240VAC to 54VDC Power Supply (J9580A)	1 HP 3800 Switch Fan Tray (J9582A) 1 HP X311 400W 100-240VAC to 12VDC Power Supply (J9581A)
<b>Ports</b>	24 RJ-45 autosensing 10/100/1000 PoE+ ports (IEEE 802.3 Type 10BASE-T, IEEE 802.3u Type 100BASE-TX, IEEE 802.3ab Type 1000BASE-T, IEEE 802.3at PoE+); Duplex: 10BASE-T/100BASE-TX: half or full; 1000BASE-T: full only  2 fixed 1000/10000 SFP+ ports  1 RJ-45 serial console port  1 RJ-45 out-of-band management port  1 Stacking module slot	48 RJ-45 autosensing 10/100/1000 PoE+ ports (IEEE 802.3 Type 10BASE-T, IEEE 802.3u Type 100BASE-TX, IEEE 802.3ab Type 1000BASE-T, IEEE 802.3at PoE+); Duplex: 10BASE-T/100BASE-TX: half or full; 1000BASE-T: full only  4 fixed 1000/10000 SFP+ ports  1 RJ-45 serial console port  1 RJ-45 out-of-band management port  1 Stacking module slot	24 RJ-45 autosensing 10/100/1000 ports (IEEE 802.3 Type 10BASE-T, IEEE 802.3u Type 100BASE-TX, IEEE 802.3ab Type 1000BASE-T); Duplex: 10BASE-T/100BASE-TX: half or full; 1000BASE-T: full only  2 fixed 1000/10000 SFP+ ports  1 RJ-45 serial console port  1 RJ-45 out-of-band management port  1 Stacking module slot
<b>Power supplies</b>	2 power supply slots 1 minimum power supply required includes: 1 x J9580A (HP X312 1000W 100-240VAC to 54VDC Power Supply)	2 power supply slots 1 minimum power supply required includes: 1 x J9580A (HP X312 1000W 100-240VAC to 54VDC Power Supply)	2 power supply slots 1 minimum power supply required includes: 1 x J9581A (HP X311 400W 100-240VAC to 12VDC Power Supply)
<b>Fan tray</b>	includes: 1 x J9582A 1 fan tray slot	includes: 1 x J9582A 1 fan tray slot	includes: 1 x J9582A 1 fan tray slot
<b>Physical characteristics</b>	17.43(w) x 18.4(d) x 1.7(h) in (44.27 x 46.74 x 4.32 cm) (1U height)	17.43(w) x 18.4(d) x 1.7(h) in (44.27 x 46.74 x 4.32 cm) (1U height)	17.43(w) x 18.4(d) x 1.7(h) in (44.27 x 46.74 x 4.32 cm) (1U height)
<b>Weight</b>	15.9 lb (7.21 kg) switch chassis with 1 power supply and fan tray installed	16.84 lb (7.64 kg) switch chassis with 1 power supply and fan tray installed	15.26 lb (6.92 kg) switch chassis with 1 power supply and fan tray installed
<b>Memory and processor</b>			
<b>Processor</b>	HP ProVision ASIC/ARM @ 350 MHz; Freescale P2020 @ 1200 MHz, 4 GB flash, 2 GB SDRAM; packet buffer size: 18 MB dynamic	HP ProVision ASIC/ARM @ 350 MHz; Freescale P2020 @ 1200 MHz, 4 GB flash, 2 GB SDRAM; packet buffer size: 36 MB dynamic	HP ProVision ASIC/ARM @ 350 MHz; Freescale P2020 @ 1200 MHz, 4 GB flash, 2 GB SDRAM; packet buffer size: 18 MB dynamic
<b>Mounting</b>	Mounts in an EIA-standard 19 in. telco rack or equipment cabinet (hardware included); horizontal surface mounting only	Mounts in an EIA-standard 19 in. telco rack or equipment cabinet (hardware included); horizontal surface mounting only	Mounts in an EIA-standard 19 in. telco rack or equipment cabinet (hardware included); horizontal surface mounting only
<b>Performance</b>			
<b>1000 Mb Latency</b>	< 2.8 µs (LIFO 64-byte packets)	< 2.8 µs (LIFO 64-byte packets)	< 2.8 µs (LIFO 64-byte packets)
<b>10 Gbps Latency</b>	< 1.9 µs (LIFO 64-byte packets)	< 1.9 µs (LIFO 64-byte packets)	< 1.9 µs (LIFO 64-byte packets)
<b>Throughput</b>	up to 65.4 million pps (64-byte packets)	up to 130.9 million pps (64-byte packets)	up to 65.4 million pps (64-byte packets)
<b>Switching capacity</b>	88 Gbps	176 Gbps	88 Gbps
<b>Routing table size</b>	10000 entries	10000 entries	10000 entries
<b>MAC address table size</b>	65500 entries	65500 entries	65500 entries
<b>Environment</b>			
<b>Operating temperature</b>	32°F to 131°F (0°C to 55°C); max temperature is 45°C when transceivers are installed	32°F to 131°F (0°C to 55°C); max temperature is 45°C when transceivers are installed	32°F to 131°F (0°C to 55°C); max temperature is 45°C when transceivers are installed
<b>Operating relative humidity</b>	15% to 95% @ 104°F (40°C), noncondensing	15% to 95% @ 104°F (40°C), noncondensing	15% to 95% @ 104°F (40°C), noncondensing
<b>Nonoperating/Storage temperature</b>	-40°F to 158°F (-40°C to 70°C)	-40°F to 158°F (-40°C to 70°C)	-40°F to 158°F (-40°C to 70°C)
<b>Nonoperating/Storage relative humidity</b>	15% to 90% @ 149°F (65°C), noncondensing	15% to 90% @ 149°F (65°C), noncondensing	15% to 90% @ 149°F (65°C), noncondensing
<b>Altitude</b>	up to 10,000 ft (3 km)	up to 10,000 ft (3 km)	up to 10,000 ft (3 km)
<b>Acoustic</b>	Power: 49 dB, Pressure: 33.7 dB	Power: 57 dB, Pressure: 41.2 dB	Power: 36 dB, Pressure: 26.4 dB
<b>Electrical characteristics</b>			
<b>Maximum heat dissipation</b>	434 BTU/hr (457.87 kJ/hr)	635 BTU/hr (669.93 kJ/hr)	434 BTU/hr (457.87 kJ/hr)
<b>Voltage</b>	100-120/200-240 VAC	100-120/200-240 VAC	100-127/200-240 VAC
<b>Current</b>	9.4/7.8 A	9.4/7.8 A	6/3 A
<b>Idle power</b>	70 W	97 W	66 W
<b>Maximum power rating</b>	127 W	186 W	127 W
<b>PoE power</b>	720 W	1080 W	
<b>Frequency</b>	50/60 Hz	50/60 Hz	50/60 Hz

# HP 3800 Switch Series

## Specifications (continued)

	HP 3800-24G-PoE+-25FP+ Switch (J9573A)	HP 3800-48G-PoE+-45FP+ Switch (J9574A)	HP 3800-24G-25FP+ Switch (J9575A)
<b>Notes</b>	Idle power is the actual power consumption of the device with no ports connected. Maximum power rating and maximum heat dissipation are the worst-case theoretical maximum numbers provided for planning the infrastructure with fully loaded PoE (if equipped), 100% traffic, all ports plugged in, and all modules populated. PoE power is the power supplied by the internal power supply. It is dependent on the type and quantity of power supplies and may be supplemented with the use of an external power supply (EPS). With a single power supply at 120 V input, a maximum of 572 W of PoE power is available.	Idle power is the actual power consumption of the device with no ports connected. Maximum power rating and maximum heat dissipation are the worst-case theoretical maximum numbers provided for planning the infrastructure with fully loaded PoE (if equipped), 100% traffic, all ports plugged in, and all modules populated. PoE power is the power supplied by the internal power supply. It is dependent on the type and quantity of power supplies and may be supplemented with the use of an external power supply (EPS). With a single power supply at 120 V input, a maximum of 514 W of PoE power is available. With a single power supply at 240 V, a maximum of 814 W of PoE power is available.	Idle power is the actual power consumption of the device with no ports connected. Maximum power rating and maximum heat dissipation are the worst-case theoretical maximum numbers provided for planning the infrastructure with fully loaded PoE (if equipped), 100% traffic, all ports plugged in, and all modules populated.
<b>Safety</b>	EN 60950/IEC 60950; UL 60950; CAN/CSA 22.2 No. 60950; EN 60825	EN 60950/IEC 60950; UL 60950; CAN/CSA 22.2 No. 60950; EN 60825	EN 60950/IEC 60950; UL 60950; CAN/CSA 22.2 No. 60950; EN 60825
<b>Emissions</b>	FCC Class A; VCCI Class A; EN 55022/CISPR 22 Class A	FCC Class A; VCCI Class A; EN 55022/CISPR 22 Class A	FCC Class A; VCCI Class A; EN 55022/CISPR 22 Class A
<b>Immunity</b>			
EN	EN 55024, CISPR 24	EN 55024, CISPR 24	EN 55024, CISPR 24
ESD	IEC 61000-4-2	IEC 61000-4-2	IEC 61000-4-2
Radiated	IEC 61000-4-3; 3 V/m	IEC 61000-4-3; 3 V/m	IEC 61000-4-3; 3 V/m
EFT/Burst	IEC 61000-4-4; 1.0 kV (power line), 0.5 kV (signal line)	IEC 61000-4-4; 1.0 kV (power line), 0.5 kV (signal line)	IEC 61000-4-4; 1.0 kV (power line), 0.5 kV (signal line)
Surge	IEC 61000-4-5; 1 kV/2 kV AC	IEC 61000-4-5; 1 kV/2 kV AC	IEC 61000-4-5; 1 kV/2 kV AC
Conducted	IEC 61000-4-6; 3 V	IEC 61000-4-6; 3 V	IEC 61000-4-6; 3 V
Power frequency magnetic field	IEC 61000-4-8; 1 A/m, 50 or 60 Hz	IEC 61000-4-8; 1 A/m, 50 or 60 Hz	IEC 61000-4-8; 1 A/m, 50 or 60 Hz
Voltage dips and interruptions	IEC 61000-4-11; >95% reductions, 0.5 period; 30% reduction, 25 periods	IEC 61000-4-11; >95% reductions, 0.5 period; 30% reduction, 25 periods	IEC 61000-4-11; >95% reductions, 0.5 period; 30% reduction, 25 periods
Harmonics	EN 61000-3-2, IEC 61000-3-2	EN 61000-3-2, IEC 61000-3-2	EN 61000-3-2, IEC 61000-3-2
Flicker	EN 61000-3-3, IEC 61000-3-3	EN 61000-3-3, IEC 61000-3-3	EN 61000-3-3, IEC 61000-3-3
<b>Management</b>	HP PCM+; HP PCM; command-line interface; Web browser; configuration menu	HP PCM+; HP PCM; command-line interface; Web browser; configuration menu	HP PCM+; HP PCM; command-line interface; Web browser; configuration menu
<b>Notes</b>	Supported 1G SFP transceivers are revision "B" or later (product number ends with the letter "B" or later, for example, J9142B, J8177C).	Supported 1G SFP transceivers are revision "B" or later (product number ends with the letter "B" or later, for example, J9142B, J8177C).	Supported 1G SFP transceivers are revision "B" or later (product number ends with the letter "B" or later, for example, J9142B, J8177C).
<b>Services</b>	3-year, 4-hour onsite, 13x5 coverage for hardware (HT021E) 3-year, 4-hour onsite, 24x7 coverage for hardware (HT023E) 3-year, 4-hour onsite, 24x7 coverage for hardware, 24x7 SW phone support and SW updates (HT028E) 3-year, 24x7 SW phone support, software updates (HT027E) 4-year, 4-hour onsite, 13x5 coverage for hardware (HT031E) 4-year, 4-hour onsite, 24x7 coverage for hardware (HT033E) 4-year, 4-hour onsite, 24x7 coverage for hardware, 24x7 software phone (HT038E) 4-year, 24x7 SW phone support, software updates (HT037E) 5-year, 4-hour onsite, 13x5 coverage for hardware (HT041E) 5-year, 4-hour onsite, 24x7 coverage for hardware (HT043E) 5-year, 4-hour onsite, 24x7 coverage for hardware, 24x7 software phone (HT048E) 5-year, 24x7 SW phone support, software updates (HT047E) 3 Yr 6 hr Call-to-Repair Onsite (HT025E) 4 Yr 6 hr Call-to-Repair Onsite (HT035E)	3-year, 4-hour onsite, 13x5 coverage for hardware (HT021E) 3-year, 4-hour onsite, 24x7 coverage for hardware (HT023E) 3-year, 4-hour onsite, 24x7 coverage for hardware, 24x7 SW phone support and SW updates (HT028E) 3-year, 24x7 SW phone support, software updates (HT027E) 4-year, 4-hour onsite, 13x5 coverage for hardware (HT031E) 4-year, 4-hour onsite, 24x7 coverage for hardware (HT033E) 4-year, 4-hour onsite, 24x7 coverage for hardware, 24x7 software phone (HT038E) 4-year, 24x7 SW phone support, software updates (HT037E) 5-year, 4-hour onsite, 13x5 coverage for hardware (HT041E) 5-year, 4-hour onsite, 24x7 coverage for hardware (HT043E) 5-year, 4-hour onsite, 24x7 coverage for hardware, 24x7 software phone (HT048E) 5-year, 24x7 SW phone support, software updates (HT047E) 3 Yr 6 hr Call-to-Repair Onsite (HT025E) 4 Yr 6 hr Call-to-Repair Onsite (HT035E)	3-year, 4-hour onsite, 13x5 coverage for hardware (HT021E) 3-year, 4-hour onsite, 24x7 coverage for hardware (HT023E) 3-year, 4-hour onsite, 24x7 coverage for hardware, 24x7 SW phone support and SW updates (HT028E) 3-year, 24x7 SW phone support, software updates (HT027E) 4-year, 4-hour onsite, 13x5 coverage for hardware (HT031E) 4-year, 4-hour onsite, 24x7 coverage for hardware (HT033E) 4-year, 4-hour onsite, 24x7 coverage for hardware, 24x7 software phone (HT038E) 4-year, 24x7 SW phone support, software updates (HT037E) 5-year, 4-hour onsite, 13x5 coverage for hardware (HT041E) 5-year, 4-hour onsite, 24x7 coverage for hardware (HT043E) 5-year, 4-hour onsite, 24x7 coverage for hardware, 24x7 software phone (HT048E) 5-year, 24x7 SW phone support, software updates (HT047E) 3 Yr 6 hr Call-to-Repair Onsite (HT025E) 4 Yr 6 hr Call-to-Repair Onsite (HT035E)



# HP 3800 Switch Series

## Specifications (continued)

HP 3800-24G-PoE+-25FP+ Switch (J9573A)	HP 3800-48G-PoE+-45FP+ Switch (J9574A)	HP 3800-24G-25FP+ Switch (J9575A)
5 Yr 6 hr Call-to-Repair Onsite (HT045E)	5 Yr 6 hr Call-to-Repair Onsite (HT045E)	5 Yr 6 hr Call-to-Repair Onsite (HT045E)
1-year, 4-hour onsite, 13x5 coverage for hardware (HT011E)	1-year, 4-hour onsite, 13x5 coverage for hardware (HT011E)	1-year, 4-hour onsite, 13x5 coverage for hardware (HT011E)
1-year, 4-hour onsite, 24x7 coverage for hardware (HT013E)	1-year, 4-hour onsite, 24x7 coverage for hardware (HT013E)	1-year, 4-hour onsite, 24x7 coverage for hardware (HT013E)
1-year, 6 hour Call-To-Repair Onsite for hardware (HT015E)	1-year, 6 hour Call-To-Repair Onsite for hardware (HT015E)	1-year, 6 hour Call-To-Repair Onsite for hardware (HT015E)
1-year, 24x7 software phone support, software updates (HT017E)	1-year, 24x7 software phone support, software updates (HT017E)	1-year, 24x7 software phone support, software updates (HT017E)
1-year, 4-hour onsite, 24x7 coverage for hardware, 24x7 software phone support and software updates (HT018E)	1-year, 4-hour onsite, 24x7 coverage for hardware, 24x7 software phone support and software updates (HT018E)	1-year, 4-hour onsite, 24x7 coverage for hardware, 24x7 software phone support and software updates (HT018E)
1-year, 24x7 software phone support, software updates + Next Business Day Hardware Exchange (HT009E)	1-year, 24x7 software phone support, software updates + Next Business Day Hardware Exchange (HT009E)	1-year, 24x7 software phone support, software updates + Next Business Day Hardware Exchange (HT009E)
1-year, 24x7 software phone support, software updates + 4 hour hardware exchange (HT010E)	1-year, 24x7 software phone support, software updates + 4 hour hardware exchange (HT010E)	1-year, 24x7 software phone support, software updates + 4 hour hardware exchange (HT010E)
3-year, 24x7 software phone support, software updates + Next Business Day Hardware Exchange (HT019E)	3-year, 24x7 software phone support, software updates + Next Business Day Hardware Exchange (HT019E)	3-year, 24x7 software phone support, software updates + Next Business Day Hardware Exchange (HT019E)
3-year, 24x7 software phone support, software updates + 4 hour Hardware Exchange (HT020E)	3-year, 24x7 software phone support, software updates + 4 hour Hardware Exchange (HT020E)	3-year, 24x7 software phone support, software updates + 4 hour Hardware Exchange (HT020E)
4-year, 24x7 software phone support, software updates + Next Business Day Hardware Exchange (HT029E)	4-year, 24x7 software phone support, software updates + Next Business Day Hardware Exchange (HT029E)	4-year, 24x7 software phone support, software updates + Next Business Day Hardware Exchange (HT029E)
4-year, 24x7 software phone support, software updates + 4 hour Hardware Exchange (HT030E)	4-year, 24x7 software phone support, software updates + 4 hour Hardware Exchange (HT030E)	4-year, 24x7 software phone support, software updates + 4 hour Hardware Exchange (HT030E)
5-year, 24x7 software phone support, software updates + Next Business Day Hardware Exchange (HT039E)	5-year, 24x7 software phone support, software updates + Next Business Day Hardware Exchange (HT039E)	5-year, 24x7 software phone support, software updates + Next Business Day Hardware Exchange (HT039E)
5-year, 24x7 software phone support, software updates + 4 hour Hardware Exchange (HT040E)	5-year, 24x7 software phone support, software updates + 4 hour Hardware Exchange (HT040E)	5-year, 24x7 software phone support, software updates + 4 hour Hardware Exchange (HT040E)
Refer to the HP website at <a href="http://www.hp.com/networking/services">www.hp.com/networking/services</a> for details on the service-level descriptions and product numbers. For details about services and response times in your area, please contact your local HP sales office.	Refer to the HP website at <a href="http://www.hp.com/networking/services">www.hp.com/networking/services</a> for details on the service-level descriptions and product numbers. For details about services and response times in your area, please contact your local HP sales office.	Refer to the HP website at <a href="http://www.hp.com/networking/services">www.hp.com/networking/services</a> for details on the service-level descriptions and product numbers. For details about services and response times in your area, please contact your local HP sales office.

# HP 3800 Switch Series

## Specifications (continued)

	HP 3800-24G-PoE+-25FP+ Switch (J9573A)	HP 3800-48G-PoE+-45FP+ Switch (J9574A)	HP 3800-24G-25FP+ Switch (J9575A)
<b>Standards and protocols</b> (applies to all products in series)	<p><b>BGP</b></p> <p>RFC 1997 BGP Communities Attribute RFC 2918 Route Refresh Capability RFC 4271 A Border Gateway Protocol 4 (BGP-4) RFC 4456 BGP Route Reflection: An Alternative to Full Mesh Internal BGP (IBGP) RFC 4724 Graceful Restart Mechanism for BGP RFC 5492 Capabilities Advertisement with BGP-4</p> <p><b>Denial of service protection</b></p> <p>CPU DoS Protection</p> <p><b>Device management</b></p> <p>RFC 1591 DNS (client) HTML and telnet management</p> <p><b>General protocols</b></p> <p>IEEE 802.1ad Q-in-Q IEEE 802.1AX-2008 Link Aggregation IEEE 802.1D MAC Bridges IEEE 802.1p Priority IEEE 802.1Q VLANs IEEE 802.1s Multiple Spanning Trees IEEE 802.1v VLAN classification by Protocol and Port IEEE 802.1w Rapid Reconfiguration of Spanning Tree IEEE 802.3ad Link Aggregation Control Protocol (LACP) IEEE 802.3af Power over Ethernet IEEE 802.3x Flow Control RFC 768 UDP RFC 783 TFTP Protocol (revision 2) RFC 792 ICMP RFC 793 TCP RFC 826 ARP RFC 854 TELNET RFC 868 Time Protocol RFC 951 BOOTP RFC 1058 RIPv1 RFC 1350 TFTP Protocol (revision 2) RFC 1519 CIDR RFC 1542 BOOTP Extensions RFC 2030 Simple Network Time Protocol (SNTP) v4 RFC 2131 DHCP RFC 2453 RIPv2 RFC 2548 (MS-RAS-Vendor only) RFC 3046 DHCP Relay Agent Information Option RFC 3576 Ext to RADIUS (CoA only) RFC 3768 VRRP RFC 4675 RADIUS VLAN &amp; Priority UDLD (Uni-directional Link Detection)</p> <p><b>IP multicast</b></p> <p>RFC 3376 IGMPv3 (host joins only)</p>	<p>RFC 3973 PIM Dense Mode RFC 4601 PIM Sparse Mode</p> <p><b>IPv6</b></p> <p>RFC 1981 IPv6 Path MTU Discovery RFC 2375 IPv6 Multicast Address Assignments RFC 2460 IPv6 Specification RFC 2464 Transmission of IPv6 over Ethernet Networks RFC 2710 Multicast Listener Discovery (MLD) for IPv6 RFC 2925 Definitions of Managed Objects for Remote Ping, Traceroute, and Lookup Operations (Ping only) RFC 3019 MLDv1 MIB RFC 3315 DHCPv6 (client only) RFC 3484 Default Address Selection for IPv6 RFC 3587 IPv6 Global Unicast Address Format RFC 3596 DNS Extension for IPv6 RFC 3810 MLDv2 (host joins only) RFC 4022 MIB for TCP RFC 4087 IP Tunnel MIB RFC 4113 MIB for UDP RFC 4213 Basic Transition Mechanisms for IPv6 Hosts and Routers RFC 4251 SSHv6 Architecture RFC 4252 SSHv6 Authentication RFC 4253 SSHv6 Transport Layer RFC 4254 SSHv6 Connection RFC 4291 IP Version 6 Addressing Architecture RFC 4293 MIB for IP RFC 4294 IPv6 Node Requirements RFC 4419 Key Exchange for SSH RFC 4443 ICMPv6 RFC 4541 IGMP &amp; MLD Snooping Switch RFC 4861 IPv6 Neighbor Discovery RFC 4862 IPv6 Stateless Address Auto-configuration RFC 5095 Deprecation of Type 0 Routing Headers in IPv6 RFC 5340 OSPFv3 for IPv6 RFC 5453 Reserved IPv6 Interface Identifiers RFC 5519 Multicast Group Membership Discovery MIB (MLDv2 only) RFC 5722 Handling of Overlapping IPv6 Fragments</p> <p><b>MIBs</b></p> <p>IEEE 802.1ap (MSTP and STP MIB's only) RFC 1213 MIB II RFC 1493 Bridge MIB RFC 1724 RIPv2 MIB RFC 1850 OSPFv2 MIB RFC 2021 RMONv2 MIB RFC 2096 IP Forwarding Table MIB RFC 2613 SMON MIB RFC 2618 RADIUS Client MIB RFC 2620 RADIUS Accounting MIB RFC 2665 Ethernet-Like-MIB RFC 2668 802.3 MAU MIB</p>	<p>RFC 2674 802.1p and IEEE 802.1Q Bridge MIB RFC 2737 Entity MIB (Version 2) RFC 2787 VRRP MIB RFC 2863 The Interfaces Group MIB RFC 2925 Ping MIB RFC 2933 IGMP MIB</p> <p><b>Network management</b></p> <p>IEEE 802.1AB Link Layer Discovery Protocol (LLDP) RFC 2819 Four groups of RMON: 1 (statistics), 2 (history), 3 (alarm) and 9 (events) RFC 3176 sFlow ANSI/TIA-1057 LLDP Media Endpoint Discovery (LLDP-MED) SNMPv1/v2c/v3 XRMON</p> <p><b>OSPF</b></p> <p>RFC 2328 OSPFv2 RFC 3101 OSPF NSSA RFC 3623 Graceful OSPF Restart (Unplanned Outages only) RFC 5340 OSPFv3 for IPv6</p> <p><b>QoS/CoS</b></p> <p>RFC 2474 DiffServ Precedence, including 8 queues/port RFC 2597 DiffServ Assured Forwarding (AF) RFC 2598 DiffServ Expedited Forwarding (EF)</p> <p><b>Security</b></p> <p>IEEE 802.1X Port Based Network Access Control RFC 1492 TACACS+ RFC 2865 RADIUS (client only) RFC 2866 RADIUS Accounting RFC 3579 RADIUS Support For Extensible Authentication Protocol (EAP) Secure Sockets Layer (SSL) SSHv2 Secure Shell</p>

# HP 3800 Switch Series

## Specifications (continued)



	HP 3800-48G-45FP+ Switch (J9576A)	HP 3800-24G-2XG Switch (J9585A)	HP 3800-48G-4XG Switch (J9586A)
<b>Included accessories</b>	1 HP 3800 Switch Fan Tray (J9582A) 1 HP X311 400W 100-240VAC to 12VDC Power Supply (J9581A)	1 HP 3800 Switch Fan Tray (J9582A) 1 HP X311 400W 100-240VAC to 12VDC Power Supply (J9581A)	1 HP 3800 Switch Fan Tray (J9582A) 1 HP X311 400W 100-240VAC to 12VDC Power Supply (J9581A)
<b>Ports</b>	48 RJ-45 autosensing 10/100/1000 ports (IEEE 802.3 Type 10BASE-T, IEEE 802.3u Type 100BASE-TX, IEEE 802.3ab Type 1000BASE-T); Duplex: 10BASE-T/100BASE-TX: half or full; 1000BASE-T: full only  4 fixed 1000/10000 SFP+ ports  1 RJ-45 serial console port  1 RJ-45 out-of-band management port  1 Stacking module slot	24 RJ-45 autosensing 10/100/1000 ports (IEEE 802.3 Type 10BASE-T, IEEE 802.3u Type 100BASE-TX, IEEE 802.3ab Type 1000BASE-T); Duplex: 10BASE-T/100BASE-TX: half or full; 1000BASE-T: full only  2 RJ-45 10-GbE ports IEEE 802.3an-2006 Type 10GBASE-T; Duplex: full only  1 RJ-45 serial console port  1 RJ-45 out-of-band management port  1 Stacking module slot	48 RJ-45 autosensing 10/100/1000 ports (IEEE 802.3 Type 10BASE-T, IEEE 802.3u Type 100BASE-TX, IEEE 802.3ab Type 1000BASE-T); Duplex: 10BASE-T/100BASE-TX: half or full; 1000BASE-T: full only  4 RJ-45 10-GbE ports IEEE 802.3an-2006 Type 10GBASE-T; Duplex: full only  1 RJ-45 serial console port  1 RJ-45 out-of-band management port  1 Stacking module slot
<b>Power supplies</b>	2 power supply slots 1 minimum power supply required includes: 1 x J9581A (HP X311 400W 100-240VAC to 12VDC Power Supply)	2 power supply slots 1 minimum power supply required includes: 1 x J9581A (HP X311 400W 100-240VAC to 12VDC Power Supply)	2 power supply slots 1 minimum power supply required includes: 1 x J9581A (HP X311 400W 100-240VAC to 12VDC Power Supply)
<b>Fan tray</b>	includes: 1 x J9582A 1 fan tray slot	includes: 1 x J9582A 1 fan tray slot	includes: 1 x J9582A 1 fan tray slot
<b>Physical characteristics</b>			
<b>Weight</b>	17.43(w) x 18.4(d) x 1.7(h) in (44.27 x 46.74 x 4.32 cm) (1U height) 16.01 lb (7.26 kg) switch chassis with 1 power supply and fan tray installed	17.43(w) x 18.4(d) x 1.7(h) in (44.27 x 46.74 x 4.32 cm) (1U height) 15.81 lb (7.17 kg) switch chassis with 1 power supply and fan tray installed	17.43(w) x 18.4(d) x 1.7(h) in (44.27 x 46.74 x 4.32 cm) (1U height) 16.36 lb (7.42 kg) switch chassis with 1 power supply and fan tray installed
<b>Memory and processor</b>			
<b>Processor</b>	HP ProVision ASIC/ARM @ 350 MHz; Freescale P2020 @ 1200 MHz, 4 GB flash, 2 GB SDRAM; packet buffer size: 36 MB dynamic	HP ProVision ASIC/ARM @ 350 MHz; Freescale P2020 @ 1200 MHz, 4 GB flash, 2 GB SDRAM; packet buffer size: 18 MB dynamic	HP ProVision ASIC/ARM @ 350 MHz; Freescale P2020 @ 1200 MHz, 4 GB flash, 2 GB SDRAM; packet buffer size: 36 MB dynamic
<b>Mounting</b>	Mounts in an EIA-standard 19 in. telco rack or equipment cabinet (hardware included); horizontal surface mounting only	Mounts in an EIA-standard 19 in. telco rack or equipment cabinet (hardware included); horizontal surface mounting only	Mounts in an EIA-standard 19 in. telco rack or equipment cabinet (hardware included); horizontal surface mounting only
<b>Performance</b>			
<b>1000 Mb Latency</b>	< 2.8 $\mu$ s (LIFO 64-byte packets)	< 2.8 $\mu$ s (LIFO 64-byte packets)	< 2.8 $\mu$ s (LIFO 64-byte packets)
<b>10 Gbps Latency</b>	< 1.9 $\mu$ s (LIFO 64-byte packets)	< 1.9 $\mu$ s (LIFO 64-byte packets)	< 1.9 $\mu$ s (LIFO 64-byte packets)
<b>Throughput</b>	up to 130.9 million pps (64-byte packets)	up to 65.4 million pps (64-byte packets)	up to 130.9 million pps (64-byte packets)
<b>Switching capacity</b>	176 Gbps	88 Gbps	176 Gbps
<b>Routing table size</b>	10000 entries	10000 entries	10000 entries
<b>MAC address table size</b>	65500 entries	65500 entries	65500 entries
<b>Environment</b>			
<b>Operating temperature</b>	32°F to 131°F (0°C to 55°C); max temperature is 45°C when transceivers are installed	32°F to 131°F (0°C to 55°C)	32°F to 131°F (0°C to 55°C); max temperature is 45°C when SFP+ transceivers are installed
<b>Operating relative humidity</b>	15% to 95% @ 104°F (40°C), noncondensing	15% to 95% @ 104°F (40°C), noncondensing	15% to 95% @ 104°F (40°C), noncondensing
<b>Nonoperating/Storage temperature</b>	-40°F to 158°F (-40°C to 70°C)	-40°F to 158°F (-40°C to 70°C)	-40°F to 158°F (-40°C to 70°C)
<b>Nonoperating/Storage relative humidity</b>	15% to 90% @ 149°F (65°C), noncondensing	15% to 90% @ 149°F (65°C), noncondensing	15% to 90% @ 149°F (65°C), noncondensing
<b>Altitude</b>	up to 10,000 ft (3 km)	up to 10,000 ft (3 km)	up to 10,000 ft (3 km)
<b>Acoustic</b>	Power: 36 dB, Pressure: 25.4 dB	Power: 39 dB, Pressure: 25.5 dB	Power: 34 dB, Pressure: 24.5 dB
<b>Electrical characteristics</b>			
<b>Maximum heat dissipation</b>	635 BTU/hr (669.93 kJ/hr)	434 BTU/hr (457.87 kJ/hr)	635 BTU/hr (669.93 kJ/hr)
<b>Voltage</b>	100-127/200-240 VAC	100-127/200-240 VAC	100-127/200-240 VAC
<b>Current</b>	6/3 A	6/3 A	6/3 A
<b>Idle power</b>	70 W	70 W	74 W
<b>Maximum power rating</b>	186 W	127 W	186 W
<b>Frequency</b>	50/60 Hz	50/60 Hz	50/60 Hz

# HP 3800 Switch Series

## Specifications (continued)

	HP 3800-48G-4SFP+ Switch (J9576A)	HP 3800-24G-2XG Switch (J9585A)	HP 3800-48G-4XG Switch (J9586A)
<b>Notes</b>	Idle power is the actual power consumption of the device with no ports connected. Maximum power rating and maximum heat dissipation are the worst-case theoretical maximum numbers provided for planning the infrastructure with fully loaded PoE (if equipped), 100% traffic, all ports plugged in, and all modules populated.	Idle power is the actual power consumption of the device with no ports connected. Maximum power rating and maximum heat dissipation are the worst-case theoretical maximum numbers provided for planning the infrastructure with fully loaded PoE (if equipped), 100% traffic, all ports plugged in, and all modules populated.	Idle power is the actual power consumption of the device with no ports connected. Maximum power rating and maximum heat dissipation are the worst-case theoretical maximum numbers provided for planning the infrastructure with fully loaded PoE (if equipped), 100% traffic, all ports plugged in, and all modules populated.
<b>Safety</b>	EN 60950/IEC 60950; UL 60950; CAN/CSA 22.2 No. 60950; EN 60825	EN 60950/IEC 60950; UL 60950; CAN/CSA 22.2 No. 60950; EN 60825	EN 60950/IEC 60950; UL 60950; CAN/CSA 22.2 No. 60950; EN 60825
<b>Emissions</b>	FCC Class A; VCCI Class A; EN 55022/CISPR 22 Class A	FCC Class A; VCCI Class A; EN 55022/CISPR 22 Class A	FCC Class A; VCCI Class A; EN 55022/CISPR 22 Class A
<b>Immunity</b>			
EN	EN 55024, CISPR 24	EN 55024, CISPR 24	EN 55024, CISPR 24
ESD	IEC 61000-4-2	IEC 61000-4-2	IEC 61000-4-2
Radiated	IEC 61000-4-3; 3 V/m	IEC 61000-4-3; 3 V/m	IEC 61000-4-3; 3 V/m
EFT/Burst	IEC 61000-4-4; 1.0 kV (power line), 0.5 kV (signal line)	IEC 61000-4-4; 1.0 kV (power line), 0.5 kV (signal line)	IEC 61000-4-4; 1.0 kV (power line), 0.5 kV (signal line)
Surge	IEC 61000-4-5; 1 kV/2 kV AC	IEC 61000-4-5; 1 kV/2 kV AC	IEC 61000-4-5; 1 kV/2 kV AC
Conducted	IEC 61000-4-6; 3 V	IEC 61000-4-6; 3 V	IEC 61000-4-6; 3 V
Power frequency magnetic field	IEC 61000-4-8; 1 A/m, 50 or 60 Hz	IEC 61000-4-8; 1 A/m, 50 or 60 Hz	IEC 61000-4-8; 1 A/m, 50 or 60 Hz
Voltage dips and interruptions	IEC 61000-4-11; >95% reductions, 0.5 period; 30% reduction, 25 periods	IEC 61000-4-11; >95% reductions, 0.5 period; 30% reduction, 25 periods	IEC 61000-4-11; >95% reductions, 0.5 period; 30% reduction, 25 periods
Harmonics	EN 61000-3-2, IEC 61000-3-2	EN 61000-3-2, IEC 61000-3-2	EN 61000-3-2, IEC 61000-3-2
Flicker	EN 61000-3-3, IEC 61000-3-3	EN 61000-3-3, IEC 61000-3-3	EN 61000-3-3, IEC 61000-3-3
<b>Management</b>	HP PCM+; HP PCM; command-line interface; Web browser; configuration menu	HP PCM+; HP PCM; command-line interface; Web browser; configuration menu	HP PCM+; HP PCM; command-line interface; Web browser; configuration menu
<b>Notes</b>	Supported 1G SFP transceivers are revision "B" or later (product number ends with the letter "B" or later, for example, J9142B, J8177C).		
<b>Services</b>	3-year, 4-hour onsite, 13x5 coverage for hardware (HT021E) 3-year, 4-hour onsite, 24x7 coverage for hardware (HT023E) 3-year, 4-hour onsite, 24x7 coverage for hardware, 24x7 SW phone support and SW updates (HT028E) 3-year, 24x7 SW phone support, software updates (HT027E) 4-year, 4-hour onsite, 13x5 coverage for hardware (HT031E) 4-year, 4-hour onsite, 24x7 coverage for hardware (HT033E) 4-year, 4-hour onsite, 24x7 coverage for hardware, 24x7 software phone (HT038E) 4-year, 24x7 SW phone support, software updates (HT037E) 5-year, 4-hour onsite, 13x5 coverage for hardware (HT041E) 5-year, 4-hour onsite, 24x7 coverage for hardware (HT043E) 5-year, 4-hour onsite, 24x7 coverage for hardware, 24x7 software phone (HT048E) 5-year, 24x7 SW phone support, software updates (HT047E) 3 Yr 6 hr Call-to-Repair Onsite (HT025E) 4 Yr 6 hr Call-to-Repair Onsite (HT035E) 5 Yr 6 hr Call-to-Repair Onsite (HT045E) 1-year, 4-hour onsite, 13x5 coverage for hardware (HT011E) 1-year, 4-hour onsite, 24x7 coverage for hardware (HT013E) 1-year, 6 hour Call-To-Repair Onsite for hardware (HT015E)	3-year, 4-hour onsite, 13x5 coverage for hardware (HT021E) 3-year, 4-hour onsite, 24x7 coverage for hardware (HT023E) 3-year, 4-hour onsite, 24x7 coverage for hardware, 24x7 SW phone support and SW updates (HT028E) 3-year, 24x7 SW phone support, software updates (HT027E) 4-year, 4-hour onsite, 13x5 coverage for hardware (HT031E) 4-year, 4-hour onsite, 24x7 coverage for hardware (HT033E) 4-year, 4-hour onsite, 24x7 coverage for hardware, 24x7 software phone (HT038E) 4-year, 24x7 SW phone support, software updates (HT037E) 5-year, 4-hour onsite, 13x5 coverage for hardware (HT041E) 5-year, 4-hour onsite, 24x7 coverage for hardware (HT043E) 5-year, 4-hour onsite, 24x7 coverage for hardware, 24x7 software phone (HT048E) 5-year, 24x7 SW phone support, software updates (HT047E) 3 Yr 6 hr Call-to-Repair Onsite (HT025E) 4 Yr 6 hr Call-to-Repair Onsite (HT035E) 5 Yr 6 hr Call-to-Repair Onsite (HT045E) 1-year, 4-hour onsite, 13x5 coverage for hardware (HT011E) 1-year, 4-hour onsite, 24x7 coverage for hardware (HT013E) 1-year, 24x7 software phone support, software updates (HT017E)	3-year, 4-hour onsite, 13x5 coverage for hardware (HT021E) 3-year, 4-hour onsite, 24x7 coverage for hardware (HT023E) 3-year, 4-hour onsite, 24x7 coverage for hardware, 24x7 SW phone support and SW updates (HT028E) 3-year, 24x7 SW phone support, software updates (HT027E) 4-year, 4-hour onsite, 13x5 coverage for hardware (HT031E) 4-year, 4-hour onsite, 24x7 coverage for hardware (HT033E) 4-year, 4-hour onsite, 24x7 coverage for hardware, 24x7 software phone (HT038E) 4-year, 24x7 SW phone support, software updates (HT037E) 5-year, 4-hour onsite, 13x5 coverage for hardware (HT041E) 5-year, 4-hour onsite, 24x7 coverage for hardware (HT043E) 5-year, 4-hour onsite, 24x7 coverage for hardware, 24x7 software phone (HT048E) 5-year, 24x7 SW phone support, software updates (HT047E) 3 Yr 6 hr Call-to-Repair Onsite (HT025E) 4 Yr 6 hr Call-to-Repair Onsite (HT035E) 5 Yr 6 hr Call-to-Repair Onsite (HT045E) 1-year, 4-hour onsite, 13x5 coverage for hardware (HT011E) 1-year, 4-hour onsite, 24x7 coverage for hardware (HT013E) 1-year, 24x7 software phone support, software updates (HT017E)

# HP 3800 Switch Series

## Specifications (continued)

HP 3800-48G-4SFP+ Switch (J9576A)	HP 3800-24G-2XG Switch (J9585A)	HP 3800-48G-4XG Switch (J9586A)
1-year, 24x7 software phone support, software updates (HT017E)	1-year, 4-hour onsite, 24x7 coverage for hardware, 24x7 software phone support and software updates (HT018E)	1-year, 4-hour onsite, 24x7 coverage for hardware, 24x7 software phone support and software updates (HT018E)
1-year, 4-hour onsite, 24x7 coverage for hardware, 24x7 software phone support and software updates (HT018E)	1-year, 24x7 software phone support, software updates + Next Business Day Hardware Exchange (HT009E)	1-year, 24x7 software phone support, software updates + Next Business Day Hardware Exchange (HT009E)
1-year, 24x7 software phone support, software updates + Next Business Day Hardware Exchange (HT009E)	1-year, 24x7 software phone support, software updates + 4 hour hardware exchange (HT010E)	1-year, 24x7 software phone support, software updates + 4 hour hardware exchange (HT010E)
1-year, 24x7 software phone support, software updates + 4 hour hardware exchange (HT010E)	3-year, 24x7 software phone support, software updates + Next Business Day Hardware Exchange (HT019E)	3-year, 24x7 software phone support, software updates + Next Business Day Hardware Exchange (HT019E)
3-year, 24x7 software phone support, software updates + Next Business Day Hardware Exchange (HT019E)	3-year, 24x7 software phone support, software updates + 4 hour Hardware Exchange (HT020E)	3-year, 24x7 software phone support, software updates + 4 hour Hardware Exchange (HT020E)
3-year, 24x7 software phone support, software updates + 4 hour Hardware Exchange (HT020E)	4-year, 24x7 software phone support, software updates + Next Business Day Hardware Exchange (HT029E)	4-year, 24x7 software phone support, software updates + Next Business Day Hardware Exchange (HT029E)
4-year, 24x7 software phone support, software updates + Next Business Day Hardware Exchange (HT029E)	4-year, 24x7 software phone support, software updates + 4 hour Hardware Exchange (HT030E)	4-year, 24x7 software phone support, software updates + 4 hour Hardware Exchange (HT030E)
4-year, 24x7 software phone support, software updates + 4 hour Hardware Exchange (HT030E)	5-year, 24x7 software phone support, software updates + Next Business Day Hardware Exchange (HT039E)	5-year, 24x7 software phone support, software updates + Next Business Day Hardware Exchange (HT039E)
5-year, 24x7 software phone support, software updates + Next Business Day Hardware Exchange (HT039E)	5-year, 24x7 software phone support, software updates + 4 hour Hardware Exchange (HT040E)	5-year, 24x7 software phone support, software updates + 4 hour Hardware Exchange (HT040E)
5-year, 24x7 software phone support, software updates + 4 hour Hardware Exchange (HT040E)	Refer to the HP website at <a href="http://www.hp.com/networking/services">www.hp.com/networking/services</a> for details on the service-level descriptions and product numbers. For details about services and response times in your area, please contact your local HP sales office.	Refer to the HP website at <a href="http://www.hp.com/networking/services">www.hp.com/networking/services</a> for details on the service-level descriptions and product numbers. For details about services and response times in your area, please contact your local HP sales office.
Refer to the HP website at <a href="http://www.hp.com/networking/services">www.hp.com/networking/services</a> for details on the service-level descriptions and product numbers. For details about services and response times in your area, please contact your local HP sales office.		

# HP 3800 Switch Series

## Specifications (continued)

	HP 3800-48G-4SFP+ Switch (J9576A)	HP 3800-24G-2XG Switch (J9585A)	HP 3800-48G-4XG Switch (J9586A)
<b>Standards and protocols</b> (applies to all products in series)	<p><b>BGP</b></p> <ul style="list-style-type: none"> <li>RFC 1997 BGP Communities Attribute</li> <li>RFC 2918 Route Refresh Capability</li> <li>RFC 4271 A Border Gateway Protocol 4 (BGP-4)</li> <li>RFC 4456 BGP Route Reflection: An Alternative to Full Mesh Internal BGP (IBGP)</li> <li>RFC 4724 Graceful Restart Mechanism for BGP</li> <li>RFC 5492 Capabilities Advertisement with BGP-4</li> </ul> <p><b>Denial of service protection</b></p> <ul style="list-style-type: none"> <li>CPU DoS Protection</li> </ul> <p><b>Device management</b></p> <ul style="list-style-type: none"> <li>RFC 1591 DNS (client)</li> <li>HTML and telnet management</li> </ul> <p><b>General protocols</b></p> <ul style="list-style-type: none"> <li>IEEE 802.1ad Q-in-Q</li> <li>IEEE 802.1AX-2008 Link Aggregation</li> <li>IEEE 802.1D MAC Bridges</li> <li>IEEE 802.1p Priority</li> <li>IEEE 802.1Q VLANs</li> <li>IEEE 802.1s Multiple Spanning Trees</li> <li>IEEE 802.1v VLAN classification by Protocol and Port</li> <li>IEEE 802.1w Rapid Reconfiguration of Spanning Tree</li> <li>IEEE 802.3ad Link Aggregation Control Protocol (LACP)</li> <li>IEEE 802.3af Power over Ethernet</li> <li>IEEE 802.3x Flow Control</li> <li>RFC 768 UDP</li> <li>RFC 783 TFTP Protocol (revision 2)</li> <li>RFC 792 ICMP</li> <li>RFC 793 TCP</li> <li>RFC 826 ARP</li> <li>RFC 854 TELNET</li> <li>RFC 868 Time Protocol</li> <li>RFC 951 BOOTP</li> <li>RFC 1058 RIPv1</li> <li>RFC 1350 TFTP Protocol (revision 2)</li> <li>RFC 1519 CIDR</li> <li>RFC 1542 BOOTP Extensions</li> <li>RFC 2030 Simple Network Time Protocol (SNTP) v4</li> <li>RFC 2131 DHCP</li> <li>RFC 2453 RIPv2</li> <li>RFC 2548 (MS-RAS-Vendor only)</li> <li>RFC 3046 DHCP Relay Agent Information Option</li> <li>RFC 3576 Ext to RADIUS (CoA only)</li> <li>RFC 3768 VRRP</li> <li>RFC 4675 RADIUS VLAN &amp; Priority</li> <li>UDLD (Uni-directional Link Detection)</li> </ul> <p><b>IP multicast</b></p> <ul style="list-style-type: none"> <li>RFC 3376 IGMPv3 (host joins only)</li> </ul>	<ul style="list-style-type: none"> <li>RFC 3973 PIM Dense Mode</li> <li>RFC 4601 PIM Sparse Mode</li> </ul> <p><b>IPv6</b></p> <ul style="list-style-type: none"> <li>RFC 1981 IPv6 Path MTU Discovery</li> <li>RFC 2375 IPv6 Multicast Address Assignments</li> <li>RFC 2460 IPv6 Specification</li> <li>RFC 2464 Transmission of IPv6 over Ethernet Networks</li> <li>RFC 2710 Multicast Listener Discovery (MLD) for IPv6</li> <li>RFC 2925 Definitions of Managed Objects for Remote Ping, Traceroute, and Lookup Operations (Ping only)</li> <li>RFC 3019 MLDv1 MIB</li> <li>RFC 3315 DHCPv6 (client only)</li> <li>RFC 3484 Default Address Selection for IPv6</li> <li>RFC 3587 IPv6 Global Unicast Address Format</li> <li>RFC 3596 DNS Extension for IPv6</li> <li>RFC 3810 MLDv2 (host joins only)</li> <li>RFC 4022 MIB for TCP</li> <li>RFC 4087 IP Tunnel MIB</li> <li>RFC 4113 MIB for UDP</li> <li>RFC 4213 Basic Transition Mechanisms for IPv6 Hosts and Routers</li> <li>RFC 4251 SSHv6 Architecture</li> <li>RFC 4252 SSHv6 Authentication</li> <li>RFC 4253 SSHv6 Transport Layer</li> <li>RFC 4254 SSHv6 Connection</li> <li>RFC 4291 IP Version 6 Addressing Architecture</li> <li>RFC 4293 MIB for IP</li> <li>RFC 4294 IPv6 Node Requirements</li> <li>RFC 4419 Key Exchange for SSH</li> <li>RFC 4443 ICMPv6</li> <li>RFC 4541 IGMP &amp; MLD Snooping Switch</li> <li>RFC 4861 IPv6 Neighbor Discovery</li> <li>RFC 4862 IPv6 Stateless Address Auto-configuration</li> <li>RFC 5095 Deprecation of Type 0 Routing Headers in IPv6</li> <li>RFC 5340 OSPFv3 for IPv6</li> <li>RFC 5453 Reserved IPv6 Interface Identifiers</li> <li>RFC 5519 Multicast Group Membership Discovery MIB (MLDv2 only)</li> <li>RFC 5722 Handling of Overlapping IPv6 Fragments</li> </ul> <p><b>MIBs</b></p> <ul style="list-style-type: none"> <li>IEEE 802.1ap (MSTP and STP MIB's only)</li> <li>RFC 1213 MIB II</li> <li>RFC 1493 Bridge MIB</li> <li>RFC 1724 RIPv2 MIB</li> <li>RFC 1850 OSPFv2 MIB</li> <li>RFC 2021 RMONv2 MIB</li> <li>RFC 2096 IP Forwarding Table MIB</li> <li>RFC 2613 SMON MIB</li> <li>RFC 2618 RADIUS Client MIB</li> <li>RFC 2620 RADIUS Accounting MIB</li> <li>RFC 2665 Ethernet-Like-MIB</li> <li>RFC 2668 802.3 MAU MIB</li> </ul>	<ul style="list-style-type: none"> <li>RFC 2674 802.1p and IEEE 802.1Q Bridge MIB</li> <li>RFC 2737 Entity MIB (Version 2)</li> <li>RFC 2787 VRRP MIB</li> <li>RFC 2863 The Interfaces Group MIB</li> <li>RFC 2925 Ping MIB</li> <li>RFC 2933 IGMP MIB</li> </ul> <p><b>Network management</b></p> <ul style="list-style-type: none"> <li>IEEE 802.1AB Link Layer Discovery Protocol (LLDP)</li> <li>RFC 2819 Four groups of RMON: 1 (statistics), 2 (history), 3 (alarm) and 9 (events)</li> <li>RFC 3176 sFlow</li> <li>ANSI/TIA-1057 LLDP Media Endpoint Discovery (LLDP-MED)</li> <li>SNMPv1/v2c/v3</li> <li>XRMON</li> </ul> <p><b>OSPF</b></p> <ul style="list-style-type: none"> <li>RFC 2328 OSPFv2</li> <li>RFC 3101 OSPF NSSA</li> <li>RFC 3623 Graceful OSPF Restart (Unplanned Outages only)</li> <li>RFC 5340 OSPFv3 for IPv6</li> </ul> <p><b>QoS/CoS</b></p> <ul style="list-style-type: none"> <li>RFC 2474 DiffServ Precedence, including 8 queues/port</li> <li>RFC 2597 DiffServ Assured Forwarding (AF)</li> <li>RFC 2598 DiffServ Expedited Forwarding (EF)</li> </ul> <p><b>Security</b></p> <ul style="list-style-type: none"> <li>IEEE 802.1X Port Based Network Access Control</li> <li>RFC 1492 TACACS+</li> <li>RFC 2865 RADIUS (client only)</li> <li>RFC 2866 RADIUS Accounting</li> <li>RFC 3579 RADIUS Support For Extensible Authentication Protocol (EAP)</li> <li>Secure Sockets Layer (SSL)</li> <li>SSHv2 Secure Shell</li> </ul>

# HP 3800 Switch Series

## Specifications (continued)



	HP 3800-24G-PoE+-2XG Switch (J9587A)	HP 3800-48G-PoE+-4XG Switch (J9588A)	HP 3800-24SFP+ Switch (J9584A)
<b>Included accessories</b>	1 HP 3800 Switch Fan Tray (J9582A) 1 HP X312 1000W 100-240VAC to 54VDC Power Supply (J9580A)	1 HP 3800 Switch Fan Tray (J9582A) 1 HP X312 1000W 100-240VAC to 54VDC Power Supply (J9580A)	1 HP 3800 Switch Fan Tray (J9582A) 1 HP X311 400W 100-240VAC to 12VDC Power Supply (J9581A)
<b>Ports</b>	24 RJ-45 autosensing 10/100/1000 PoE+ ports (IEEE 802.3 Type 10BASE-T, IEEE 802.3u Type 100BASE-TX, IEEE 802.3ab Type 1000BASE-T, IEEE 802.3at PoE+); Duplex: 10BASE-T/100BASE-TX: half or full; 1000BASE-T: full only  2 RJ-45 10-GbE ports IEEE 802.3an-2006 Type 10GBASE-T; Duplex: full only  1 RJ-45 serial console port  1 RJ-45 out-of-band management port  1 Stacking module slot	48 RJ-45 autosensing 10/100/1000 PoE+ ports (IEEE 802.3 Type 10BASE-T, IEEE 802.3u Type 100BASE-TX, IEEE 802.3ab Type 1000BASE-T, IEEE 802.3at PoE+); Duplex: 10BASE-T/100BASE-TX: half or full; 1000BASE-T: full only  4 RJ-45 10-GbE ports IEEE 802.3an-2006 Type 10GBASE-T; Duplex: full only  1 RJ-45 serial console port  1 RJ-45 out-of-band management port  1 Stacking module slot	24 SFP 100/1000 Mbps ports (IEEE 802.3u Type 100BASE-TX, IEEE 802.3ab Type 1000BASE-T); Duplex: 100BASE-TX: half or full; 1000BASE-T: full only  2 fixed 1000/10000 SFP+ ports  1 RJ-45 serial console port  1 RJ-45 out-of-band management port  1 Stacking module slot
<b>Power supplies</b>	2 power supply slots 1 minimum power supply required includes: 1 x J9580A (HP X312 1000W 100-240VAC to 54VDC Power Supply)	2 power supply slots 1 minimum power supply required includes: 1 x J9580A (HP X312 1000W 100-240VAC to 54VDC Power Supply)	2 power supply slots 1 minimum power supply required includes: 1 x J9581A (HP X311 400W 100-240VAC to 12VDC Power Supply)
<b>Fan tray</b>	includes: 1 x J9582A 1 fan tray slot	includes: 1 x J9582A 1 fan tray slot	includes: 1 x J9582A 1 fan tray slot
<b>Physical characteristics</b>			
<b>Weight</b>	17.43(w) x 18.4(d) x 1.7(h) in (44.27 x 46.74 x 4.32 cm) (1U height) 16.45 lb (7.46 kg) switch chassis with 1 power supply and fan tray installed	17.43(w) x 18.4(d) x 1.7(h) in (44.27 x 46.74 x 4.32 cm) (1U height) 17.24 lb (7.82 kg) switch chassis with 1 power supply and fan tray installed	17.43(w) x 18.4(d) x 1.7(h) in (44.27 x 46.74 x 4.32 cm) (1U height) 16.01 lb (7.26 kg) switch chassis with 1 power supply and fan tray installed
<b>Memory and processor</b>			
<b>Processor</b>	HP ProVision ASIC/ARM @ 350 MHz; Freescale P2020 @ 1200 MHz, 4 GB flash, 2 GB SDRAM; packet buffer size: 18 MB dynamic	HP ProVision ASIC/ARM @ 350 MHz; Freescale P2020 @ 1200 MHz, 4 GB flash, 2 GB SDRAM; packet buffer size: 36 MB dynamic	HP ProVision ASIC/ARM @ 350 MHz; Freescale P2020 @ 1200 MHz, 4 GB flash, 2 GB SDRAM; packet buffer size: 18 MB dynamic
<b>Mounting</b>	Mounts in an EIA-standard 19 in. telco rack or equipment cabinet (hardware included); horizontal surface mounting only	Mounts in an EIA-standard 19 in. telco rack or equipment cabinet (hardware included); horizontal surface mounting only	Mounts in an EIA-standard 19 in. telco rack or equipment cabinet (hardware included); horizontal surface mounting only
<b>Performance</b>			
1000 Mb Latency	< 2.8 $\mu$ s (LIFO 64-byte packets)	< 2.8 $\mu$ s (LIFO 64-byte packets)	< 2.8 $\mu$ s (LIFO 64-byte packets)
10 Gbps Latency	< 1.9 $\mu$ s (LIFO 64-byte packets)	< 1.9 $\mu$ s (LIFO 64-byte packets)	< 1.9 $\mu$ s (LIFO 64-byte packets)
Throughput	up to 65.4 million pps (64-byte packets)	up to 130.9 million pps (64-byte packets)	up to 65.4 million pps (64-byte packets)
Switching capacity	88 Gbps	176 Gbps	88 Gbps
Routing table size	10000 entries	10000 entries	10000 entries
MAC address table size	65500 entries	65500 entries	65500 entries
<b>Environment</b>			
Operating temperature	32°F to 131°F (0°C to 55°C)	32°F to 131°F (0°C to 55°C); max temperature is 45C when SFP+ transceivers are installed	32°F to 113°F (0°C to 45°C)
Operating relative humidity	15% to 95% @ 104°F (40°C), noncondensing	15% to 95% @ 104°F (40°C), noncondensing	15% to 95% @ 104°F (40°C), noncondensing
Nonoperating/Storage temperature	-40°F to 158°F (-40°C to 70°C)	-40°F to 158°F (-40°C to 70°C)	-40°F to 158°F (-40°C to 70°C)
Nonoperating/Storage relative humidity	15% to 90% @ 149°F (65°C), noncondensing	15% to 90% @ 149°F (65°C), noncondensing	15% to 90% @ 149°F (65°C), noncondensing
Altitude	up to 10,000 ft (3 km)	up to 10,000 ft (3 km)	up to 10,000 ft (3 km)
Acoustic	Power: 48 dB, Pressure: 32.6 dB	Power: 57 dB, Pressure: 41.5 dB	Power: 36 dB, Pressure: 25 dB
<b>Electrical characteristics</b>			
Maximum heat dissipation	434 BTU/hr (457.87 kJ/hr)	635 BTU/hr (669.93 kJ/hr)	434 BTU/hr (457.87 kJ/hr)
Voltage	100-120/200-240 VAC	100-120/200-240 VAC	100-127/200-240 VAC
Current	9.4/7.8 A	9.4/7.8 A	6/3 A
Idle power	71 W	100 W	55 W
Maximum power rating	127 W	186 W	127 W
PoE power	720 W	1080 W	
Frequency	50/60 Hz	50/60 Hz	50/60 Hz

# HP 3800 Switch Series

## Specifications (continued)

	HP 3800-24G-PoE+-2XG Switch (J9587A)	HP 3800-48G-PoE+-4XG Switch (J9588A)	HP 3800-24SFP-2SFP+ Switch (J9584A)
<b>Notes</b>	<p>Idle power is the actual power consumption of the device with no ports connected.</p> <p>Maximum power rating and maximum heat dissipation are the worst-case theoretical maximum numbers provided for planning the infrastructure with fully loaded PoE (if equipped), 100% traffic, all ports plugged in, and all modules populated.</p> <p>PoE power is the power supplied by the internal power supply. It is dependent on the type and quantity of power supplies and may be supplemented with the use of an external power supply (EPS).</p> <p>With a single power supply at 120 V input, a maximum of 572 W of PoE power is available.</p>	<p>Idle power is the actual power consumption of the device with no ports connected.</p> <p>Maximum power rating and maximum heat dissipation are the worst-case theoretical maximum numbers provided for planning the infrastructure with fully loaded PoE (if equipped), 100% traffic, all ports plugged in, and all modules populated.</p> <p>PoE power is the power supplied by the internal power supply. It is dependent on the type and quantity of power supplies and may be supplemented with the use of an external power supply (EPS).</p> <p>With a single power supply at 120 V input, a maximum of 514 W of PoE power is available. With a single power supply at 240 V input, a maximum of 814 W of PoE power is available.</p>	<p>Idle power is the actual power consumption of the device with no ports connected.</p> <p>Maximum power rating and maximum heat dissipation are the worst-case theoretical maximum numbers provided for planning the infrastructure with fully loaded PoE (if equipped), 100% traffic, all ports plugged in, and all modules populated.</p>
<b>Safety</b>	EN 60950/IEC 60950; UL 60950; CAN/CSA 22.2 No. 60950; EN 60825	EN 60950/IEC 60950; UL 60950; CAN/CSA 22.2 No. 60950; EN 60825	EN 60950/IEC 60950; UL 60950; CAN/CSA 22.2 No. 60950; EN 60825
<b>Emissions</b>	FCC Class A; VCCI Class A; EN 55022/CISPR 22 Class A	FCC Class A; VCCI Class A; EN 55022/CISPR 22 Class A	FCC Class A; VCCI Class A; EN 55022/CISPR 22 Class A
<b>Immunity</b>			
EN	EN 55024, CISPR 24	EN 55024, CISPR 24	EN 55024, CISPR 24
ESD	IEC 61000-4-2	IEC 61000-4-2	IEC 61000-4-2
Radiated	IEC 61000-4-3; 3 V/m	IEC 61000-4-3; 3 V/m	IEC 61000-4-3; 3 V/m
EFT/Burst	IEC 61000-4-4; 1.0 kV (power line), 0.5 kV (signal line)	IEC 61000-4-4; 1.0 kV (power line), 0.5 kV (signal line)	IEC 61000-4-4; 1.0 kV (power line), 0.5 kV (signal line)
Surge	IEC 61000-4-5; 1 kV/2 kV AC	IEC 61000-4-5; 1 kV/2 kV AC	IEC 61000-4-5; 1 kV/2 kV AC
Conducted	IEC 61000-4-6; 3 V	IEC 61000-4-6; 3 V	IEC 61000-4-6; 3 V
Power frequency magnetic field	IEC 61000-4-8; 1 A/m, 50 or 60 Hz	IEC 61000-4-8; 1 A/m, 50 or 60 Hz	IEC 61000-4-8; 1 A/m, 50 or 60 Hz
Voltage dips and interruptions	IEC 61000-4-11; >95% reductions, 0.5 period; 30% reduction, 25 periods	IEC 61000-4-11; >95% reductions, 0.5 period; 30% reduction, 25 periods	IEC 61000-4-11; >95% reductions, 0.5 period; 30% reduction, 25 periods
Harmonics	EN 61000-3-2, IEC 61000-3-2	EN 61000-3-2, IEC 61000-3-2	EN 61000-3-2, IEC 61000-3-2
Flicker	EN 61000-3-3, IEC 61000-3-3	EN 61000-3-3, IEC 61000-3-3	EN 61000-3-3, IEC 61000-3-3
<b>Management</b>	HP PCM+; HP PCM; command-line interface; Web browser; configuration menu	HP PCM+; HP PCM; command-line interface; Web browser; configuration menu	HP PCM+; HP PCM; command-line interface; Web browser; configuration menu
<b>Notes</b>			Supported 1G SFP transceivers are revision "B" or later (product number ends with the letter "B" or later, for example, J9142B, J8177C).
<b>Services</b>	<p>3-year, 4-hour onsite, 13x5 coverage for hardware (HT021E)</p> <p>3-year, 4-hour onsite, 24x7 coverage for hardware (HT023E)</p> <p>3-year, 4-hour onsite, 24x7 coverage for hardware, 24x7 SW phone support and SW updates (HT028E)</p> <p>3-year, 24x7 SW phone support, software updates (HT027E)</p> <p>4-year, 4-hour onsite, 13x5 coverage for hardware (HT031E)</p> <p>4-year, 4-hour onsite, 24x7 coverage for hardware (HT033E)</p> <p>4-year, 4-hour onsite, 24x7 coverage for hardware, 24x7 software phone (HT038E)</p> <p>4-year, 24x7 SW phone support, software updates (HT037E)</p> <p>5-year, 4-hour onsite, 13x5 coverage for hardware (HT041E)</p> <p>5-year, 4-hour onsite, 24x7 coverage for hardware (HT043E)</p> <p>5-year, 4-hour onsite, 24x7 coverage for hardware, 24x7 software phone (HT048E)</p> <p>5-year, 24x7 SW phone support, software updates (HT047E)</p> <p>3 Yr 6 hr Call-to-Repair Onsite (HT025E)</p> <p>4 Yr 6 hr Call-to-Repair Onsite (HT035E)</p>	<p>3-year, 4-hour onsite, 13x5 coverage for hardware (HT021E)</p> <p>3-year, 4-hour onsite, 24x7 coverage for hardware (HT023E)</p> <p>3-year, 4-hour onsite, 24x7 coverage for hardware, 24x7 SW phone support and SW updates (HT028E)</p> <p>3-year, 24x7 SW phone support, software updates (HT027E)</p> <p>4-year, 4-hour onsite, 13x5 coverage for hardware (HT031E)</p> <p>4-year, 4-hour onsite, 24x7 coverage for hardware (HT033E)</p> <p>4-year, 4-hour onsite, 24x7 coverage for hardware, 24x7 software phone (HT038E)</p> <p>4-year, 24x7 SW phone support, software updates (HT037E)</p> <p>5-year, 4-hour onsite, 13x5 coverage for hardware (HT041E)</p> <p>5-year, 4-hour onsite, 24x7 coverage for hardware (HT043E)</p> <p>5-year, 4-hour onsite, 24x7 coverage for hardware, 24x7 software phone (HT048E)</p> <p>5-year, 24x7 SW phone support, software updates (HT047E)</p> <p>3 Yr 6 hr Call-to-Repair Onsite (HT025E)</p> <p>4 Yr 6 hr Call-to-Repair Onsite (HT035E)</p>	<p>3-year, 4-hour onsite, 13x5 coverage for hardware (HT021E)</p> <p>3-year, 4-hour onsite, 24x7 coverage for hardware (HT023E)</p> <p>3-year, 4-hour onsite, 24x7 coverage for hardware, 24x7 SW phone support and SW updates (HT028E)</p> <p>3-year, 24x7 SW phone support, software updates (HT027E)</p> <p>4-year, 4-hour onsite, 13x5 coverage for hardware (HT031E)</p> <p>4-year, 4-hour onsite, 24x7 coverage for hardware (HT033E)</p> <p>4-year, 4-hour onsite, 24x7 coverage for hardware, 24x7 software phone (HT038E)</p> <p>4-year, 24x7 SW phone support, software updates (HT037E)</p> <p>5-year, 4-hour onsite, 13x5 coverage for hardware (HT041E)</p> <p>5-year, 4-hour onsite, 24x7 coverage for hardware (HT043E)</p> <p>5-year, 4-hour onsite, 24x7 coverage for hardware, 24x7 software phone (HT048E)</p> <p>5-year, 24x7 SW phone support, software updates (HT047E)</p> <p>3 Yr 6 hr Call-to-Repair Onsite (HT025E)</p> <p>4 Yr 6 hr Call-to-Repair Onsite (HT035E)</p>



# HP 3800 Switch Series

## Specifications (continued)

HP 3800-24G-PoE+-2XG Switch (J9587A)	HP 3800-48G-PoE+-4XG Switch (J9588A)	HP 3800-24SFP-25FP+ Switch (J9584A)
<p>5 Yr 6 hr Call-to-Repair Onsite (HT045E)</p> <p>1-year, 4-hour onsite, 13x5 coverage for hardware (HT011E)</p> <p>1-year, 4-hour onsite, 24x7 coverage for hardware (HT013E)</p> <p>1-year, 24x7 software phone support, software updates (HT017E)</p> <p>1-year, 4-hour onsite, 24x7 coverage for hardware, 24x7 software phone support and software updates (HT018E)</p> <p>1-year, 24x7 software phone support, software updates + Next Business Day Hardware Exchange (HT009E)</p> <p>1-year, 24x7 software phone support, software updates + 4 hour hardware exchange (HT010E)</p> <p>3-year, 24x7 software phone support, software updates + Next Business Day Hardware Exchange (HT019E)</p> <p>3-year, 24x7 software phone support, software updates + 4 hour Hardware Exchange (HT020E)</p> <p>4-year, 24x7 software phone support, software updates + Next Business Day Hardware Exchange (HT029E)</p> <p>4-year, 24x7 software phone support, software updates + 4 hour Hardware Exchange (HT030E)</p> <p>5-year, 24x7 software phone support, software updates + Next Business Day Hardware Exchange (HT039E)</p> <p>5-year, 24x7 software phone support, software updates + 4 hour Hardware Exchange (HT040E)</p> <p>Refer to the HP website at <a href="http://www.hp.com/networking/services">www.hp.com/networking/services</a> for details on the service-level descriptions and product numbers. For details about services and response times in your area, please contact your local HP sales office.</p>	<p>5 Yr 6 hr Call-to-Repair Onsite (HT045E)</p> <p>1-year, 4-hour onsite, 13x5 coverage for hardware (HT011E)</p> <p>1-year, 4-hour onsite, 24x7 coverage for hardware (HT013E)</p> <p>1-year, 24x7 software phone support, software updates (HT017E)</p> <p>1-year, 4-hour onsite, 24x7 coverage for hardware, 24x7 software phone support and software updates (HT018E)</p> <p>1-year, 24x7 software phone support, software updates + Next Business Day Hardware Exchange (HT009E)</p> <p>1-year, 24x7 software phone support, software updates + 4 hour hardware exchange (HT010E)</p> <p>3-year, 24x7 software phone support, software updates + Next Business Day Hardware Exchange (HT019E)</p> <p>3-year, 24x7 software phone support, software updates + 4 hour Hardware Exchange (HT020E)</p> <p>4-year, 24x7 software phone support, software updates + Next Business Day Hardware Exchange (HT029E)</p> <p>4-year, 24x7 software phone support, software updates + 4 hour Hardware Exchange (HT030E)</p> <p>5-year, 24x7 software phone support, software updates + Next Business Day Hardware Exchange (HT039E)</p> <p>5-year, 24x7 software phone support, software updates + 4 hour Hardware Exchange (HT040E)</p> <p>Refer to the HP website at <a href="http://www.hp.com/networking/services">www.hp.com/networking/services</a> for details on the service-level descriptions and product numbers. For details about services and response times in your area, please contact your local HP sales office.</p>	<p>5 Yr 6 hr Call-to-Repair Onsite (HT045E)</p> <p>1-year, 4-hour onsite, 13x5 coverage for hardware (HT011E)</p> <p>1-year, 4-hour onsite, 24x7 coverage for hardware (HT013E)</p> <p>1-year, 24x7 software phone support, software updates (HT017E)</p> <p>1-year, 4-hour onsite, 24x7 coverage for hardware, 24x7 software phone support and software updates (HT018E)</p> <p>1-year, 24x7 software phone support, software updates + Next Business Day Hardware Exchange (HT009E)</p> <p>1-year, 24x7 software phone support, software updates + 4 hour hardware exchange (HT010E)</p> <p>3-year, 24x7 software phone support, software updates + Next Business Day Hardware Exchange (HT019E)</p> <p>3-year, 24x7 software phone support, software updates + 4 hour Hardware Exchange (HT020E)</p> <p>4-year, 24x7 software phone support, software updates + Next Business Day Hardware Exchange (HT029E)</p> <p>4-year, 24x7 software phone support, software updates + 4 hour Hardware Exchange (HT030E)</p> <p>5-year, 24x7 software phone support, software updates + Next Business Day Hardware Exchange (HT039E)</p> <p>5-year, 24x7 software phone support, software updates + 4 hour Hardware Exchange (HT040E)</p> <p>Refer to the HP website at <a href="http://www.hp.com/networking/services">www.hp.com/networking/services</a> for details on the service-level descriptions and product numbers. For details about services and response times in your area, please contact your local HP sales office.</p>

# HP 3800 Switch Series

## Specifications (continued)

	HP 3800-24G-PoE+-2XG Switch (J9587A)	HP 3800-48G-PoE+-4XG Switch (J9588A)	HP 3800-24SFP-2SFP+ Switch (J9584A)
<b>Standards and protocols</b> (applies to all products in series)	<p><b>BGP</b></p> <ul style="list-style-type: none"> <li>RFC 1997 BGP Communities Attribute</li> <li>RFC 2918 Route Refresh Capability</li> <li>RFC 4271 A Border Gateway Protocol 4 (BGP-4)</li> <li>RFC 4456 BGP Route Reflection: An Alternative to Full Mesh Internal BGP (IBGP)</li> <li>RFC 4724 Graceful Restart Mechanism for BGP</li> <li>RFC 5492 Capabilities Advertisement with BGP-4</li> </ul> <p><b>Denial of service protection</b></p> <ul style="list-style-type: none"> <li>CPU DoS Protection</li> </ul> <p><b>Device management</b></p> <ul style="list-style-type: none"> <li>RFC 1591 DNS (client)</li> <li>HTML and telnet management</li> </ul> <p><b>General protocols</b></p> <ul style="list-style-type: none"> <li>IEEE 802.1ad Q-in-Q</li> <li>IEEE 802.1AX-2008 Link Aggregation</li> <li>IEEE 802.1D MAC Bridges</li> <li>IEEE 802.1p Priority</li> <li>IEEE 802.1Q VLANs</li> <li>IEEE 802.1s Multiple Spanning Trees</li> <li>IEEE 802.1v VLAN classification by Protocol and Port</li> <li>IEEE 802.1w Rapid Reconfiguration of Spanning Tree</li> <li>IEEE 802.3ad Link Aggregation Control Protocol (LACP)</li> <li>IEEE 802.3af Power over Ethernet</li> <li>IEEE 802.3x Flow Control</li> <li>RFC 768 UDP</li> <li>RFC 783 TFTP Protocol (revision 2)</li> <li>RFC 792 ICMP</li> <li>RFC 793 TCP</li> <li>RFC 826 ARP</li> <li>RFC 854 TELNET</li> <li>RFC 868 Time Protocol</li> <li>RFC 951 BOOTP</li> <li>RFC 1058 RIPv1</li> <li>RFC 1350 TFTP Protocol (revision 2)</li> <li>RFC 1519 CIDR</li> <li>RFC 1542 BOOTP Extensions</li> <li>RFC 2030 Simple Network Time Protocol (SNTP) v4</li> <li>RFC 2131 DHCP</li> <li>RFC 2453 RIPv2</li> <li>RFC 2548 (MS-RAS-Vendor only)</li> <li>RFC 3046 DHCP Relay Agent Information Option</li> <li>RFC 3576 Ext to RADIUS (CoA only)</li> <li>RFC 3768 VRRP</li> <li>RFC 4675 RADIUS VLAN &amp; Priority</li> <li>UDLD (Uni-directional Link Detection)</li> </ul> <p><b>IP multicast</b></p> <ul style="list-style-type: none"> <li>RFC 3376 IGMPv3 (host joins only)</li> </ul>	<ul style="list-style-type: none"> <li>RFC 3973 PIM Dense Mode</li> <li>RFC 4601 PIM Sparse Mode</li> </ul> <p><b>IPv6</b></p> <ul style="list-style-type: none"> <li>RFC 1981 IPv6 Path MTU Discovery</li> <li>RFC 2375 IPv6 Multicast Address Assignments</li> <li>RFC 2460 IPv6 Specification</li> <li>RFC 2464 Transmission of IPv6 over Ethernet Networks</li> <li>RFC 2710 Multicast Listener Discovery (MLD) for IPv6</li> <li>RFC 2925 Definitions of Managed Objects for Remote Ping, Traceroute, and Lookup Operations (Ping only)</li> <li>RFC 3019 MLDv1 MIB</li> <li>RFC 3315 DHCPv6 (client only)</li> <li>RFC 3484 Default Address Selection for IPv6</li> <li>RFC 3587 IPv6 Global Unicast Address Format</li> <li>RFC 3596 DNS Extension for IPv6</li> <li>RFC 3810 MLDv2 (host joins only)</li> <li>RFC 4022 MIB for TCP</li> <li>RFC 4087 IP Tunnel MIB</li> <li>RFC 4113 MIB for UDP</li> <li>RFC 4213 Basic Transition Mechanisms for IPv6 Hosts and Routers</li> <li>RFC 4251 SSHv6 Architecture</li> <li>RFC 4252 SSHv6 Authentication</li> <li>RFC 4253 SSHv6 Transport Layer</li> <li>RFC 4254 SSHv6 Connection</li> <li>RFC 4291 IP Version 6 Addressing Architecture</li> <li>RFC 4293 MIB for IP</li> <li>RFC 4294 IPv6 Node Requirements</li> <li>RFC 4419 Key Exchange for SSH</li> <li>RFC 4443 ICMPv6</li> <li>RFC 4541 IGMP &amp; MLD Snooping Switch</li> <li>RFC 4861 IPv6 Neighbor Discovery</li> <li>RFC 4862 IPv6 Stateless Address Auto-configuration</li> <li>RFC 5095 Deprecation of Type 0 Routing Headers in IPv6</li> <li>RFC 5340 OSPFv3 for IPv6</li> <li>RFC 5453 Reserved IPv6 Interface Identifiers</li> <li>RFC 5519 Multicast Group Membership Discovery MIB (MLDv2 only)</li> <li>RFC 5722 Handling of Overlapping IPv6 Fragments</li> </ul> <p><b>MIBs</b></p> <ul style="list-style-type: none"> <li>IEEE 802.1ap (MSTP and STP MIB's only)</li> <li>RFC 1213 MIB II</li> <li>RFC 1493 Bridge MIB</li> <li>RFC 1724 RIPv2 MIB</li> <li>RFC 1850 OSPFv2 MIB</li> <li>RFC 2021 RMONv2 MIB</li> <li>RFC 2096 IP Forwarding Table MIB</li> <li>RFC 2613 SMON MIB</li> <li>RFC 2618 RADIUS Client MIB</li> <li>RFC 2620 RADIUS Accounting MIB</li> <li>RFC 2665 Ethernet-Like-MIB</li> <li>RFC 2668 802.3 MAU MIB</li> </ul>	<ul style="list-style-type: none"> <li>RFC 2674 802.1p and IEEE 802.1Q Bridge MIB</li> <li>RFC 2737 Entity MIB (Version 2)</li> <li>RFC 2787 VRRP MIB</li> <li>RFC 2863 The Interfaces Group MIB</li> <li>RFC 2925 Ping MIB</li> <li>RFC 2933 IGMP MIB</li> </ul> <p><b>Network management</b></p> <ul style="list-style-type: none"> <li>IEEE 802.1AB Link Layer Discovery Protocol (LLDP)</li> <li>RFC 2819 Four groups of RMON: 1 (statistics), 2 (history), 3 (alarm) and 9 (events)</li> <li>RFC 3176 sFlow</li> <li>ANSI/TIA-1057 LLDP Media Endpoint Discovery (LLDP-MED)</li> <li>SNMPv1/v2c/v3</li> <li>XRMON</li> </ul> <p><b>OSPF</b></p> <ul style="list-style-type: none"> <li>RFC 2328 OSPFv2</li> <li>RFC 3101 OSPF NSSA</li> <li>RFC 3623 Graceful OSPF Restart (Unplanned Outages only)</li> <li>RFC 5340 OSPFv3 for IPv6</li> </ul> <p><b>QoS/CoS</b></p> <ul style="list-style-type: none"> <li>RFC 2474 DiffServ Precedence, including 8 queues/port</li> <li>RFC 2597 DiffServ Assured Forwarding (AF)</li> <li>RFC 2598 DiffServ Expedited Forwarding (EF)</li> </ul> <p><b>Security</b></p> <ul style="list-style-type: none"> <li>IEEE 802.1X Port Based Network Access Control</li> <li>RFC 1492 TACACS+</li> <li>RFC 2865 RADIUS (client only)</li> <li>RFC 2866 RADIUS Accounting</li> <li>RFC 3579 RADIUS Support For Extensible Authentication Protocol (EAP)</li> <li>Secure Sockets Layer (SSL)</li> <li>SSHv2 Secure Shell</li> </ul>

## HP 3800 Switch Series accessories

### Modules

HP 3800 4-port Stacking Module (J9577A)

### Cables

HP 3800 0.5m Stacking Cable (J9578A)

HP 3800 1m Stacking Cable (J9665A)

HP 3800 3m Stacking Cable (J9579A)

### Fan Tray

HP 3800 Switch Fan Tray (J9582A)

### Mounting Kit

HP X410 1U Universal 4-post Rack Mounting Kit (J9583A)

### HP 3800-24G-PoE+-2SFP+ Switch (J9573A)

HP X121 1G SFP LC SX Transceiver (J4858C)

HP X121 1G SFP LC LX Transceiver (J4859C)

HP X121 1G SFP LC LH Transceiver (J4860C)

HP X121 1G SFP RJ45 T Transceiver (J8177C)

HP X122 1G SFP LC BX-D Transceiver (J9142B)

HP X122 1G SFP LC BX-U Transceiver (J9143B)

HP X132 10G SFP+ LC SR Transceiver (J9150A)

HP X132 10G SFP+ LC LR Transceiver (J9151A)

HP X132 10G SFP+ LC LRM Transceiver (J9152A)

HP X132 10G SFP+ LC ER Transceiver (J9153A)

HP 0.5 m Multimode OM3 LC/LC Optical Cable (AJ833A)

HP 1 m Multimode OM3 LC/LC Optical Cable (AJ834A)

HP 2 m Multimode OM3 LC/LC Optical Cable (AJ835A)

HP 5 m Multimode OM3 LC/LC Optical Cable (AJ836A)

HP 15 m Multimode OM3 LC/LC Optical Cable (AJ837A)

HP 30 m Multimode OM3 LC/LC Optical Cable (AJ838A)

HP 50 m Multimode OM3 LC/LC Optical Cable (AJ839A)

HP 0.5 m PremierFlex OM3+ LC/LC Optical Cable (BK837A)

HP 1 m PremierFlex OM3+ LC/LC Optical Cable (BK838A)

HP 2 m PremierFlex OM3+ LC/LC Optical Cable (BK839A)

HP 5 m PremierFlex OM3+ LC/LC Optical Cable (BK840A)

HP 15 m PremierFlex OM3+ LC/LC Optical Cable (BK841A)

HP 30 m PremierFlex OM3+ LC/LC Optical Cable (BK842A)

HP 50 m PremierFlex OM3+ LC/LC Optical Cable (BK843A)

HP X242 10G SFP+ to SFP+ 1m Direct Attach Copper Cable (J9281B)

HP X242 10G SFP+ to SFP+ 3m Direct Attach Copper Cable (J9283B)

HP X242 10G SFP+ to SFP+ 7m Direct Attach Copper Cable (J9285B)

HP X244 10G XFP to SFP+ 1m Direct Attach Copper Cable (J9300A)

HP X244 10G XFP to SFP+ 3m Direct Attach Copper Cable (J9301A)

HP X244 10G XFP to SFP+ 5m Direct Attach Copper Cable (J9302A)

HP X312 1000W 100-240VAC to 54VDC Power Supply (J9580A)

### HP 3800-48G-PoE+-4SFP+ Switch (J9574A)

HP X121 1G SFP LC SX Transceiver (J4858C)

HP X121 1G SFP LC LX Transceiver (J4859C)

HP X121 1G SFP LC LH Transceiver (J4860C)

HP X121 1G SFP RJ45 T Transceiver (J8177C)

HP X122 1G SFP LC BX-D Transceiver (J9142B)

HP X122 1G SFP LC BX-U Transceiver (J9143B)

HP X132 10G SFP+ LC SR Transceiver (J9150A)

HP X132 10G SFP+ LC LR Transceiver (J9151A)

HP X132 10G SFP+ LC LRM Transceiver (J9152A)

HP X132 10G SFP+ LC ER Transceiver (J9153A)

HP 0.5 m Multimode OM3 LC/LC Optical Cable (AJ833A)

HP 1 m Multimode OM3 LC/LC Optical Cable (AJ834A)

HP 2 m Multimode OM3 LC/LC Optical Cable (AJ835A)

HP 5 m Multimode OM3 LC/LC Optical Cable (AJ836A)

HP 15 m Multimode OM3 LC/LC Optical Cable (AJ837A)

HP 30 m Multimode OM3 LC/LC Optical Cable (AJ838A)

HP 50 m Multimode OM3 LC/LC Optical Cable (AJ839A)

HP 0.5 m PremierFlex OM3+ LC/LC Optical Cable (BK837A)

HP 1 m PremierFlex OM3+ LC/LC Optical Cable (BK838A)

HP 2 m PremierFlex OM3+ LC/LC Optical Cable (BK839A)

HP 5 m PremierFlex OM3+ LC/LC Optical Cable (BK840A)

HP 15 m PremierFlex OM3+ LC/LC Optical Cable (BK841A)

HP 30 m PremierFlex OM3+ LC/LC Optical Cable (BK842A)

HP 50 m PremierFlex OM3+ LC/LC Optical Cable (BK843A)

HP X242 10G SFP+ to SFP+ 1m Direct Attach Copper Cable (J9281B)

HP X242 10G SFP+ to SFP+ 3m Direct Attach Copper Cable (J9283B)

HP X242 10G SFP+ to SFP+ 7m Direct Attach Copper Cable (J9285B)

HP X244 10G XFP to SFP+ 1m Direct Attach Copper Cable (J9300A)

HP X244 10G XFP to SFP+ 3m Direct Attach Copper Cable (J9301A)

HP X244 10G XFP to SFP+ 5m Direct Attach Copper Cable (J9302A)

HP X312 1000W 100-240VAC to 54VDC Power Supply (J9580A)

### HP 3800-24G-2SFP+ Switch (J9575A)

HP X121 1G SFP LC SX Transceiver (J4858C)

HP X121 1G SFP LC LX Transceiver (J4859C)

HP X121 1G SFP LC LH Transceiver (J4860C)

HP X121 1G SFP RJ45 T Transceiver (J8177C)

HP X122 1G SFP LC BX-D Transceiver (J9142B)

HP X122 1G SFP LC BX-U Transceiver (J9143B)

HP X132 10G SFP+ LC SR Transceiver (J9150A)

HP X132 10G SFP+ LC LR Transceiver (J9151A)

HP X132 10G SFP+ LC LRM Transceiver (J9152A)

HP X132 10G SFP+ LC ER Transceiver (J9153A)

HP 0.5 m Multimode OM3 LC/LC Optical Cable (AJ833A)

HP 1 m Multimode OM3 LC/LC Optical Cable (AJ834A)

HP 2 m Multimode OM3 LC/LC Optical Cable (AJ835A)

HP 5 m Multimode OM3 LC/LC Optical Cable (AJ836A)

HP 15 m Multimode OM3 LC/LC Optical Cable (AJ837A)

HP 30 m Multimode OM3 LC/LC Optical Cable (AJ838A)

HP 50 m Multimode OM3 LC/LC Optical Cable (AJ839A)

## HP 3800 Switch Series accessories (continued)

HP 0.5 m PremierFlex OM3+ LC/LC Optical Cable (BK837A)  
HP 1 m PremierFlex OM3+ LC/LC Optical Cable (BK838A)  
HP 2 m PremierFlex OM3+ LC/LC Optical Cable (BK839A)  
HP 5 m PremierFlex OM3+ LC/LC Optical Cable (BK840A)  
HP 15 m PremierFlex OM3+ LC/LC Optical Cable (BK841A)  
HP 30 m PremierFlex OM3+ LC/LC Optical Cable (BK842A)  
HP 50 m PremierFlex OM3+ LC/LC Optical Cable (BK843A)  
HP X242 10G SFP+ to SFP+ 1m Direct Attach Copper Cable (J9281B)  
HP X242 10G SFP+ to SFP+ 3m Direct Attach Copper Cable (J9283B)  
HP X242 10G SFP+ to SFP+ 7m Direct Attach Copper Cable (J9285B)  
HP X244 10G XFP to SFP+ 1m Direct Attach Copper Cable (J9300A)  
HP X244 10G XFP to SFP+ 3m Direct Attach Copper Cable (J9301A)  
HP X244 10G XFP to SFP+ 5m Direct Attach Copper Cable (J9302A)  
HP X311 400W 100-240VAC to 12VDC Power Supply (J9581A)

### HP 3800-48G-4SFP+ Switch (J9576A)

HP X121 1G SFP LC SX Transceiver (J4858C)  
HP X121 1G SFP LC LX Transceiver (J4859C)  
HP X121 1G SFP LC LH Transceiver (J4860C)  
HP X121 1G SFP RJ45 T Transceiver (J8177C)  
HP X122 1G SFP LC BX-D Transceiver (J9142B)  
HP X122 1G SFP LC BX-U Transceiver (J9143B)  
HP X132 10G SFP+ LC SR Transceiver (J9150A)  
HP X132 10G SFP+ LC LR Transceiver (J9151A)  
HP X132 10G SFP+ LC LRM Transceiver (J9152A)  
HP X132 10G SFP+ LC ER Transceiver (J9153A)  
HP 0.5 m Multimode OM3 LC/LC Optical Cable (AJ833A)  
HP 1 m Multimode OM3 LC/LC Optical Cable (AJ834A)  
HP 2 m Multimode OM3 LC/LC Optical Cable (AJ835A)  
HP 5 m Multimode OM3 LC/LC Optical Cable (AJ836A)  
HP 15 m Multimode OM3 LC/LC Optical Cable (AJ837A)  
HP 30 m Multimode OM3 LC/LC Optical Cable (AJ838A)  
HP 50 m Multimode OM3 LC/LC Optical Cable (AJ839A)  
HP 0.5 m PremierFlex OM3+ LC/LC Optical Cable (BK837A)  
HP 1 m PremierFlex OM3+ LC/LC Optical Cable (BK838A)  
HP 2 m PremierFlex OM3+ LC/LC Optical Cable (BK839A)  
HP 5 m PremierFlex OM3+ LC/LC Optical Cable (BK840A)  
HP 15 m PremierFlex OM3+ LC/LC Optical Cable (BK841A)  
HP 30 m PremierFlex OM3+ LC/LC Optical Cable (BK842A)  
HP 50 m PremierFlex OM3+ LC/LC Optical Cable (BK843A)  
HP X242 10G SFP+ to SFP+ 1m Direct Attach Copper Cable (J9281B)  
HP X242 10G SFP+ to SFP+ 3m Direct Attach Copper Cable (J9283B)  
HP X242 10G SFP+ to SFP+ 7m Direct Attach Copper Cable (J9285B)  
HP X244 10G XFP to SFP+ 1m Direct Attach Copper Cable (J9300A)  
HP X244 10G XFP to SFP+ 3m Direct Attach Copper Cable (J9301A)  
HP X244 10G XFP to SFP+ 5m Direct Attach Copper Cable (J9302A)

HP X311 400W 100-240VAC to 12VDC Power Supply (J9581A)  
**HP 3800-24G-2XG Switch (J9585A)**

HP X311 400W 100-240VAC to 12VDC Power Supply (J9581A)

### HP 3800-48G-4XG Switch (J9586A)

HP X311 400W 100-240VAC to 12VDC Power Supply (J9581A)

### HP 3800-24G-PoE+-2XG Switch (J9587A)

HP X312 1000W 100-240VAC to 54VDC Power Supply (J9580A)

### HP 3800-48G-PoE+-4XG Switch (J9588A)

HP X312 1000W 100-240VAC to 54VDC Power Supply (J9580A)

### HP 3800-24SFP-2SFP+ Switch (J9584A)

HP X121 1G SFP LC SX Transceiver (J4858C)  
HP X121 1G SFP LC LX Transceiver (J4859C)  
HP X121 1G SFP LC LH Transceiver (J4860C)  
HP X121 1G SFP RJ45 T Transceiver (J8177C)  
HP X122 1G SFP LC BX-D Transceiver (J9142B)  
HP X122 1G SFP LC BX-U Transceiver (J9143B)  
HP X132 10G SFP+ LC SR Transceiver (J9150A)  
HP X132 10G SFP+ LC LR Transceiver (J9151A)  
HP X132 10G SFP+ LC LRM Transceiver (J9152A)  
HP X132 10G SFP+ LC ER Transceiver (J9153A)  
HP X111 100M SFP LC FX Transceiver (J9054C)  
HP X112 100M SFP LC BX-D Transceiver (J9099B)  
HP X112 100M SFP LC BX-U Transceiver (J9100B)  
HP 0.5 m Multimode OM3 LC/LC Optical Cable (AJ833A)  
HP 1 m Multimode OM3 LC/LC Optical Cable (AJ834A)  
HP 2 m Multimode OM3 LC/LC Optical Cable (AJ835A)  
HP 5 m Multimode OM3 LC/LC Optical Cable (AJ836A)  
HP 15 m Multimode OM3 LC/LC Optical Cable (AJ837A)  
HP 30 m Multimode OM3 LC/LC Optical Cable (AJ838A)  
HP 50 m Multimode OM3 LC/LC Optical Cable (AJ839A)  
HP 0.5 m PremierFlex OM3+ LC/LC Optical Cable (BK837A)  
HP 1 m PremierFlex OM3+ LC/LC Optical Cable (BK838A)  
HP 2 m PremierFlex OM3+ LC/LC Optical Cable (BK839A)  
HP 5 m PremierFlex OM3+ LC/LC Optical Cable (BK840A)  
HP 15 m PremierFlex OM3+ LC/LC Optical Cable (BK841A)  
HP 30 m PremierFlex OM3+ LC/LC Optical Cable (BK842A)  
HP 50 m PremierFlex OM3+ LC/LC Optical Cable (BK843A)  
HP X242 10G SFP+ to SFP+ 1m Direct Attach Copper Cable (J9281B)  
HP X242 10G SFP+ to SFP+ 3m Direct Attach Copper Cable (J9283B)  
HP X242 10G SFP+ to SFP+ 7m Direct Attach Copper Cable (J9285B)  
HP X244 10G XFP to SFP+ 1m Direct Attach Copper Cable (J9300A)  
HP X244 10G XFP to SFP+ 3m Direct Attach Copper Cable (J9301A)  
HP X244 10G XFP to SFP+ 5m Direct Attach Copper Cable (J9302A)  
HP X311 400W 100-240VAC to 12VDC Power Supply (J9581A)

---

**To learn more, visit [hp.com/networking](http://hp.com/networking)**

© Copyright 2011-2012 Hewlett-Packard Development Company, L.P. The information contained herein is subject to change without notice. The only warranties for HP products and services are set forth in the express warranty statements accompanying such products and services. Nothing herein should be construed as constituting an additional warranty. HP shall not be liable for technical or editorial errors or omissions contained herein.

Microsoft is a U.S. registered trademark of Microsoft Corporation.

4AA3-7115ENW, Created September 2011; Updated September 2012, Rev. 3

